



E79 GOLD MINES

Money in the Ground

Resources Rising Stars Summer Series

Sydney 29 November 2022, Melbourne 1 December 2022

DISCLAIMER

This presentation contains only an overview of E79 Gold Mines Limited ("E79" or the "Company") and its activities and operations. The contents of this presentation, including matters relating to the geology and exploration potential of the Company's projects, may rely on various assumptions and subjective interpretations which it is not possible to detail in this presentation and which have not been subject to any independent verification.

This presentation contains a number of forward-looking statements. Known and unknown risks and uncertainties, and factors outside of the Company's control, may cause the actual results, performance and achievements of the Company to differ materially from those expressed or implied in this presentation.

To the maximum extent permitted by law, E79 does not warrant the accuracy, currency or completeness of the information in this presentation, nor the future performance of the Company, and will not be responsible for any loss or damage arising from the use of the information.

The information contained in this presentation is not a substitute for detailed investigation or analysis of any particular issue. Current and potential investors should seek independent advice before making any investment decision in regard to the Company or its activities.

The information in this presentation that relates to E79 exploration results is based on information compiled by Mr Ned Summerhayes, a Competent Person who is a member of the Australian Institute of Geoscientists. Mr Summerhayes is a full-time employee, a shareholder and an option holder of the Company. Mr Summerhayes has sufficient experience that is relevant to the style of mineralisation and type of deposit under consideration and to the activity being undertaken to qualify as a Competent Person as defined in the 2012 Edition of the 'Australasian Code for Reporting of Exploration Results, Mineral Resources and Ore Reserves'. Mr Summerhayes consents to the inclusion in the report of the matters based on his information in the form and context in which it appears.

OVERVIEW



GOOD MANAGEMENT

Track record of discovery and successful development

- 2008 Explorer of the Year (Integra Mining)
- 2010 Miner of the Year (Integra Mining)
- 2020 Craig Oliver Award Winner (Stavelly Minerals)



GOOD STRATEGY

'Money in the ground', applied technology in exploration leading to discovery



GOOD GROUND

Two sizeable projects in prolific 'world-class' greenstone belts



SHAREHOLDER VALUE

A history of delivering for Shareholders

CORPORATE



Non-Executive Chair
Chris Cairns

Non-Executive Director
Deborah Lord

Non-Executive Director
Peter Ironside

Chief Executive Officer
Ned Summerhayes

Company Secretary
Amanda Sparks

\$0.14
Share Price

66,000,749
Shares on issue

\$9.42M
Market
Capitalisation

\$6.15M
Cash on Hand
(30 Sept 2022)

\$3.27M
Enterprise
Value

~15.8%
Board and
Management
Holding

14.3%
Shares on
escrow

45%
Top 20
Shareholders

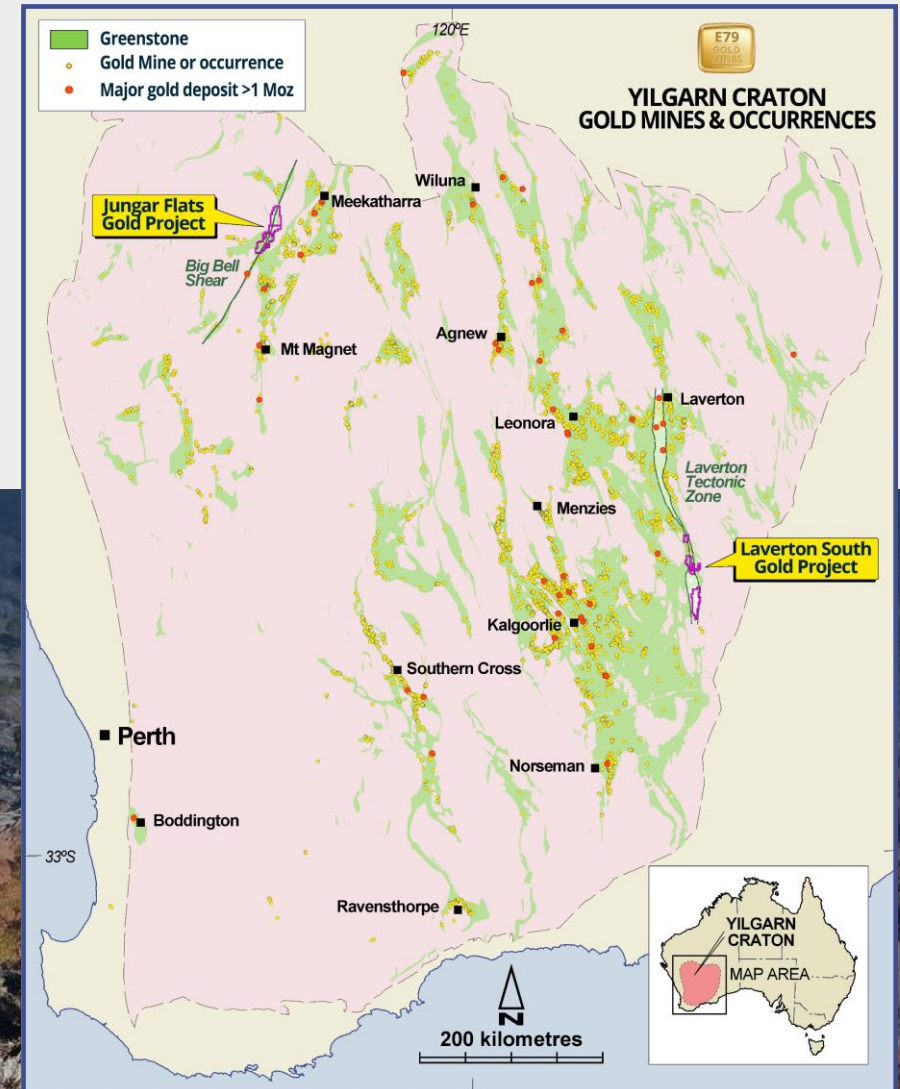
PROJECTS

TWO PROJECTS IN THE EASTERN GOLDFIELDS OF WESTERN AUSTRALIA



355 km² of tenure in the Laverton Tectonic Zone - one of the world's most prolific gold belts ~30Moz

541km² of tenure in the Murchison Goldfields – ~30Moz of endowment



PROJECTS

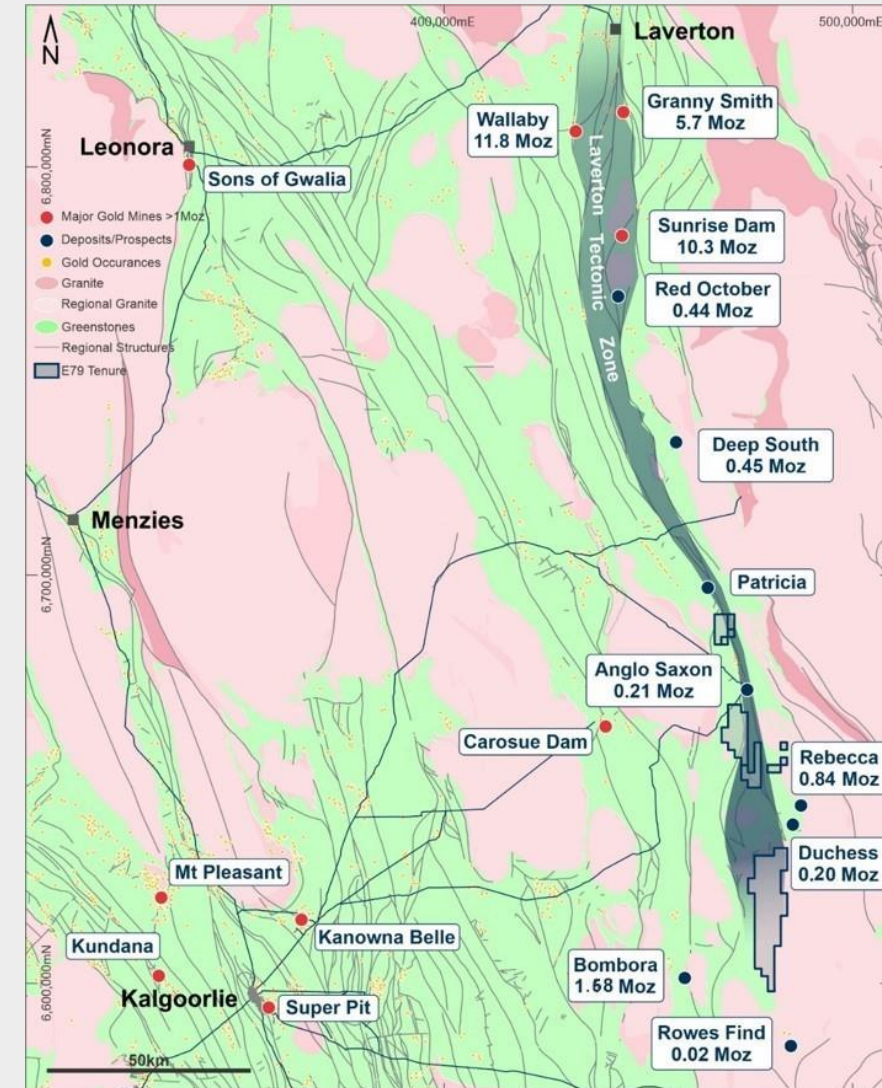
LAVERTON SOUTH PROJECT



Relative to the north-central portions of the belt, the southern portion is under-explored

Deposit	Historical Production			Resources						Endowment
	Tonnes (kt)	Grade	Ounces	Meas & Ind			Inf			
				Tonnes (kt)	Grade	Ounces	Tonnes (kt)	Grade	Ounces	Ounces
Granny Smith ¹	-	-	5,100,000	3,581	3.77	434,000	2,067	3.44	229,000	5,763,000
Wallaby ²	-	-	4,500,000	29,990	6.20	5,977,000	8,985	4.41	1,273,000	11,750,000
Sunrise Dam ³	-	-	6,700,000	41,090	2.02	2,670,000	12,550	2.38	960,000	10,330,000
Red October ⁴	1,700	6.1	342,000	324	4.6	48,000	99	15.3	49,000	439,000
Deep South ⁵	2,077	3.1	209,236	1,897	2.7	162,000	1,031	2.3	78,000	449,236
Anglo Saxon ⁶	673	2.4	49,694	449	6.9	99,000	347	5.2	58,000	206,694
Rebecca ⁷	-	-	-	13,600	1.5	640,000	6,800	0.9	200,000	840,000
Duchess ⁸	-	-	-	4,150	0.9	125,000	2,700	0.8	75,000	195,000
Lake Roe ⁹	-	-	-	15,863	1.53	778,000	16,066	1.8	906,000	1,684,000
Rows Find ¹⁰	-	-	-	-	-	-	148	3.5	17,000	17,000
										31,673,930

1. Production – Icenil Gold Limited Prospectus, 2021, Independent Geologist Report, page 130. Resources – Gold Fields 2020 Mineral Resource & Reserve Supplement to the Integrated Annual Report (IAR).
2. Production – Gold Fields Annexure to the 2020 Mineral Resources and Reserves Supplement. Resources – Gold Fields 2020 Mineral Resource & Reserve Supplement to the IAR.
3. Production – Icenil Gold Limited, Independent Geologist Report, 14 Mile Well Gold Project, page 14. Resources – AngloGold Ashanti 2019 Mineral Resource & Reserve Statement.
4. Production – Mafsa Resources Limited ASX Announcement, 28 March 2018. Resources – Mafsa Resources Limited 2020 Annual Report.
5. Production – Saracen Annual Reports 2017, 2018, 2019. Resources – Saracen Annual Report 2020.
6. Production – Hawthorn Resources Limited 2020 Annual Report. Resources – Hawthorn Resources Limited Mineral Resource Update, 31 January 2020.
7. Resources – Apollo Consolidated Limited 2020 Annual Report.
8. Resources – Apollo Consolidated Limited 2020 Annual Report.
9. Resources – Breaker Resources Limited 2020 Annual Report.
10. Resources – Black Cat Syndicate Limited 2020 Annual Report.



PROJECTS

LAVERTON SOUTH PROJECT



- Pinjin 100% owned
- Lake Yindana 100% Owned



Rebecca Gold Project

+1 Moz resource

(Ramelius Resources 12/4/22)



Lake Roe Gold Project

+1.5 Moz resource

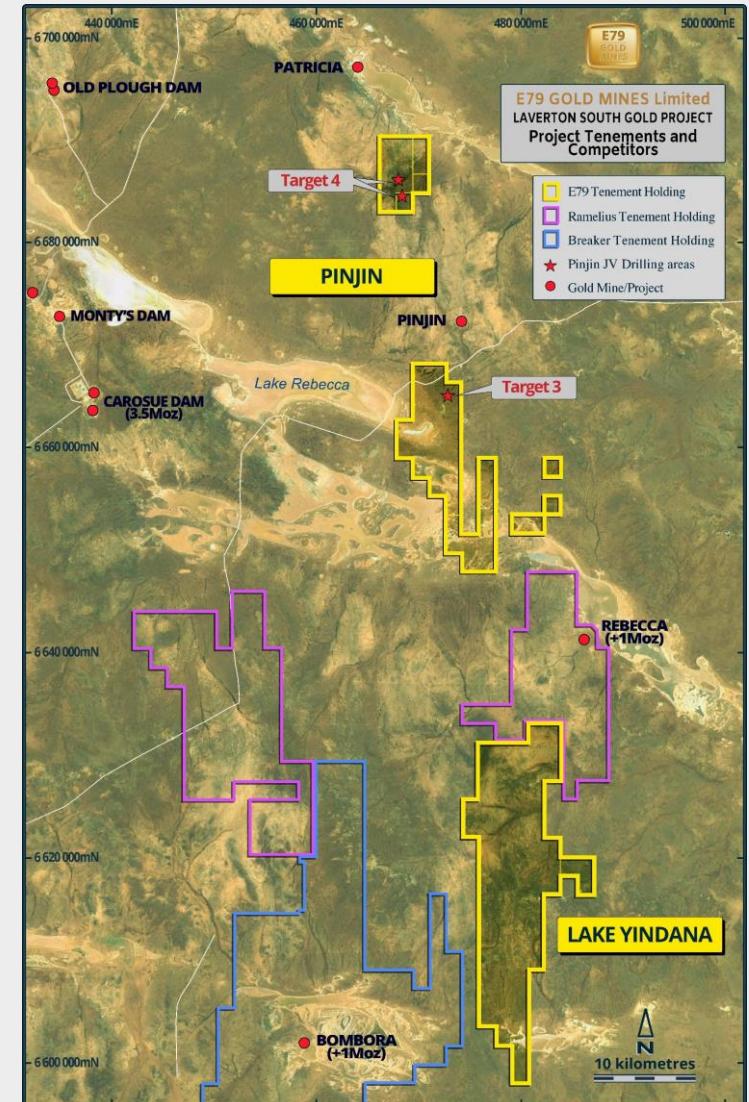
(Breaker Resources 20/12/21)



Carosue Dam

+4 Moz endowment

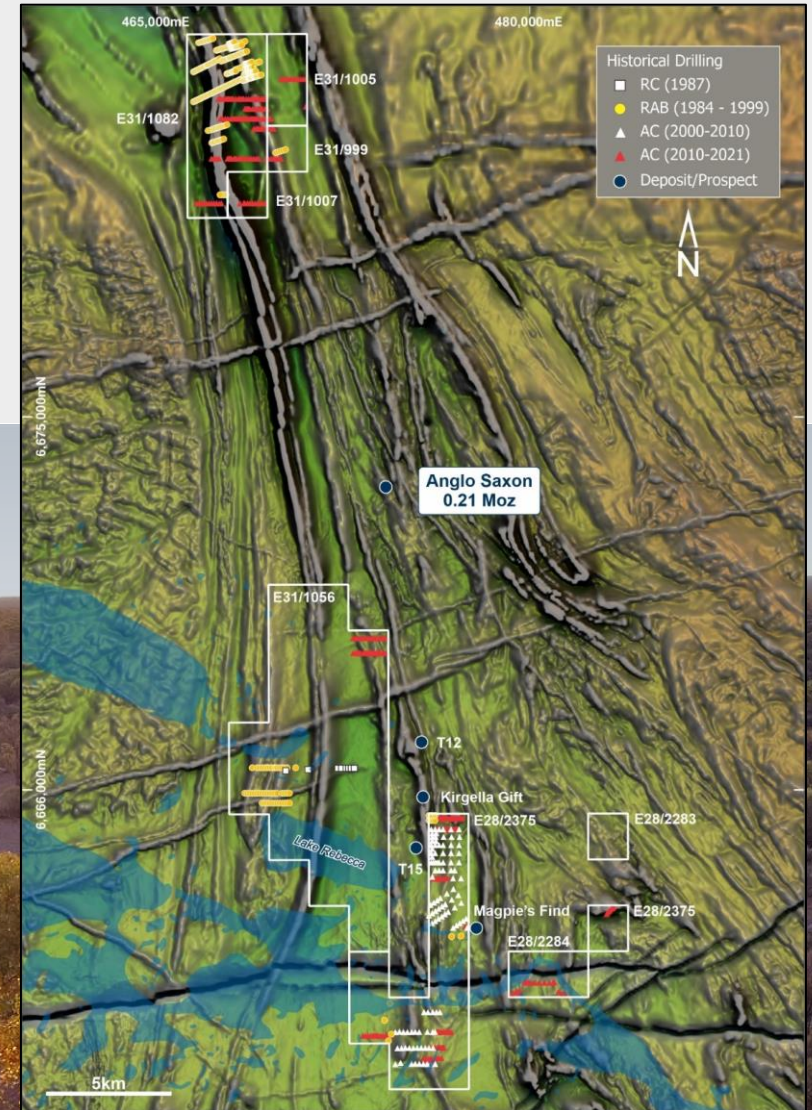
(Northern Star 3/5/22)



LAVERTON SOUTH PROJECT - PINJIN



- E79 100%
- A series of tenements along strike north and south of the Anglo Saxon (Trouser Legs) Gold Mine, Pinjin Goldfield
- In conjunction with the Lake Yindana tenement, the tenure controls the north and south strike extensions of the Rebecca / Duchess discoveries



PROJECTS

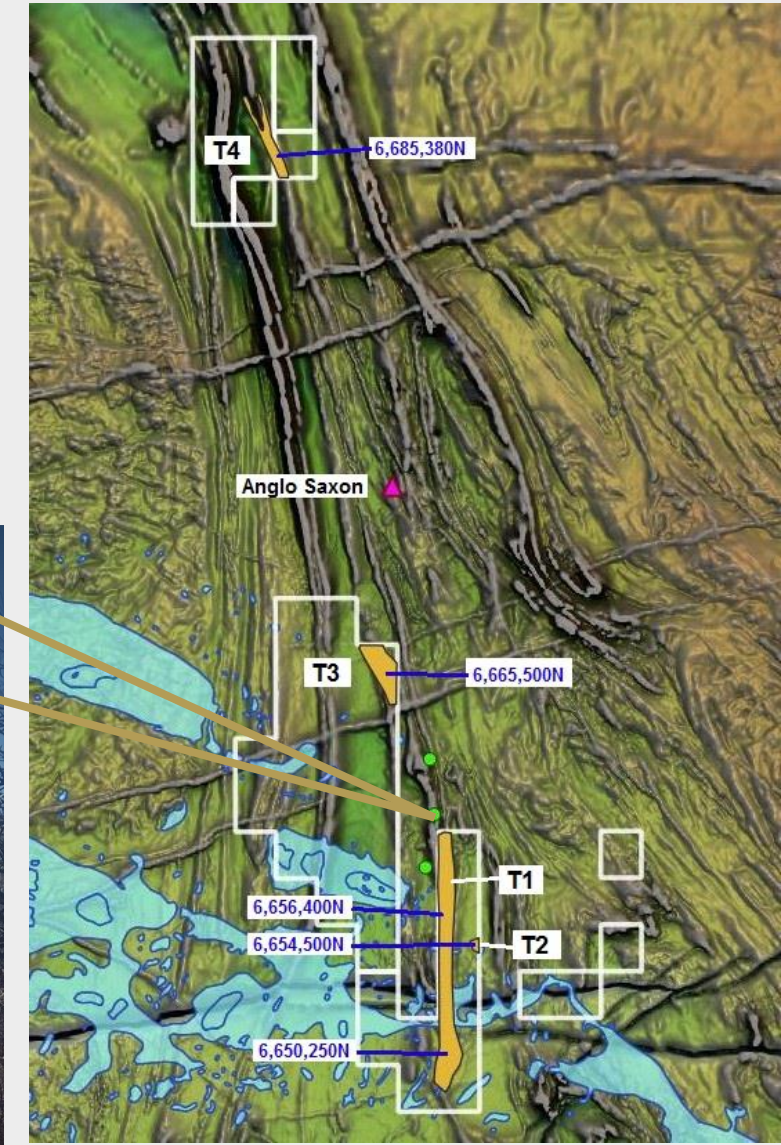
LAVERTON SOUTH PROJECT - PINJIN



Targeting completed by previous explorer, St Barbara – walk-up drill targets including

- T1
- T2
- T3 – Drilled by E79
- T4 – Drilled by E79

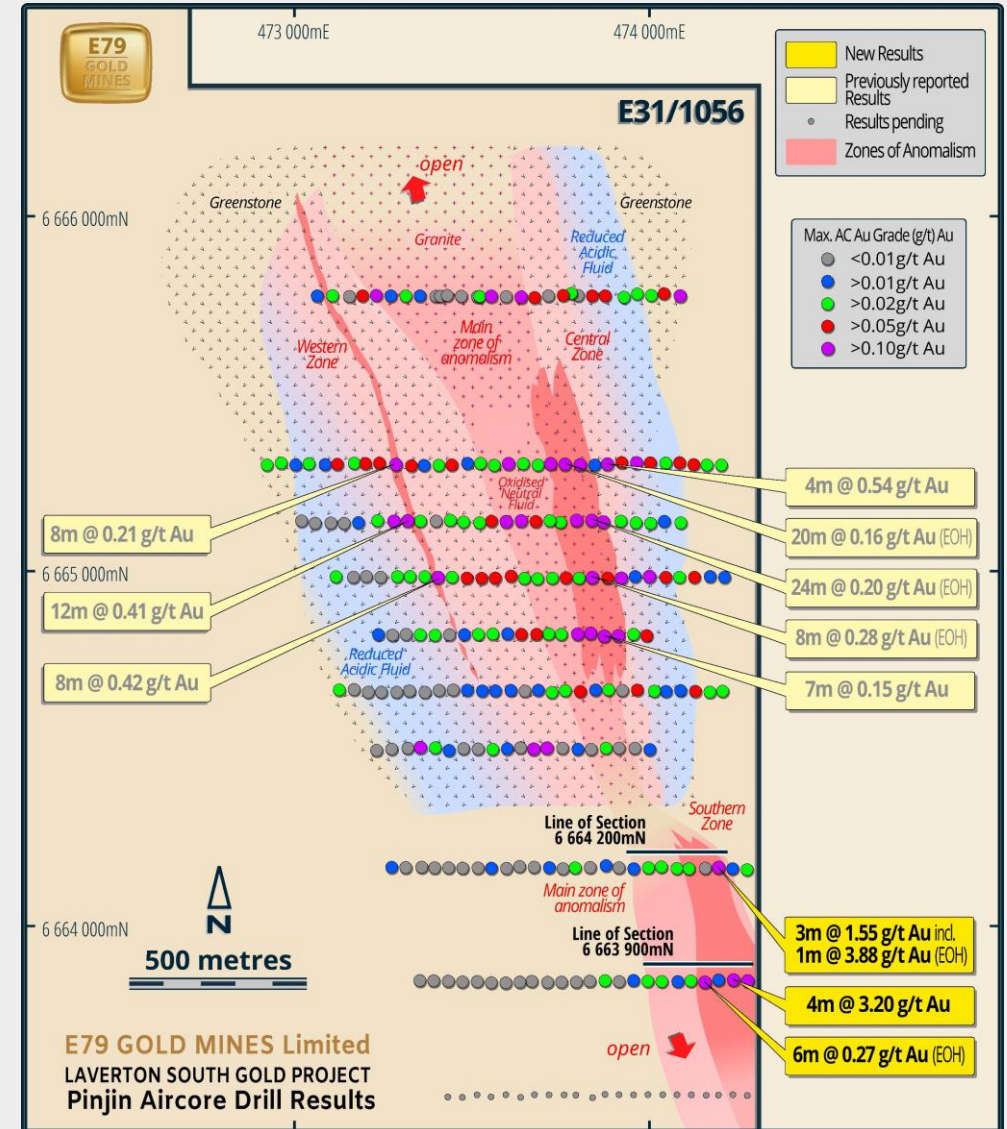
Kirgella's Gift RC drilling results include:
33m @ 3.10g/t Au from 51m
(Renaissance Minerals Limited, ASX announcement, 11 April 2011)



TARGET 3 - PINJIN



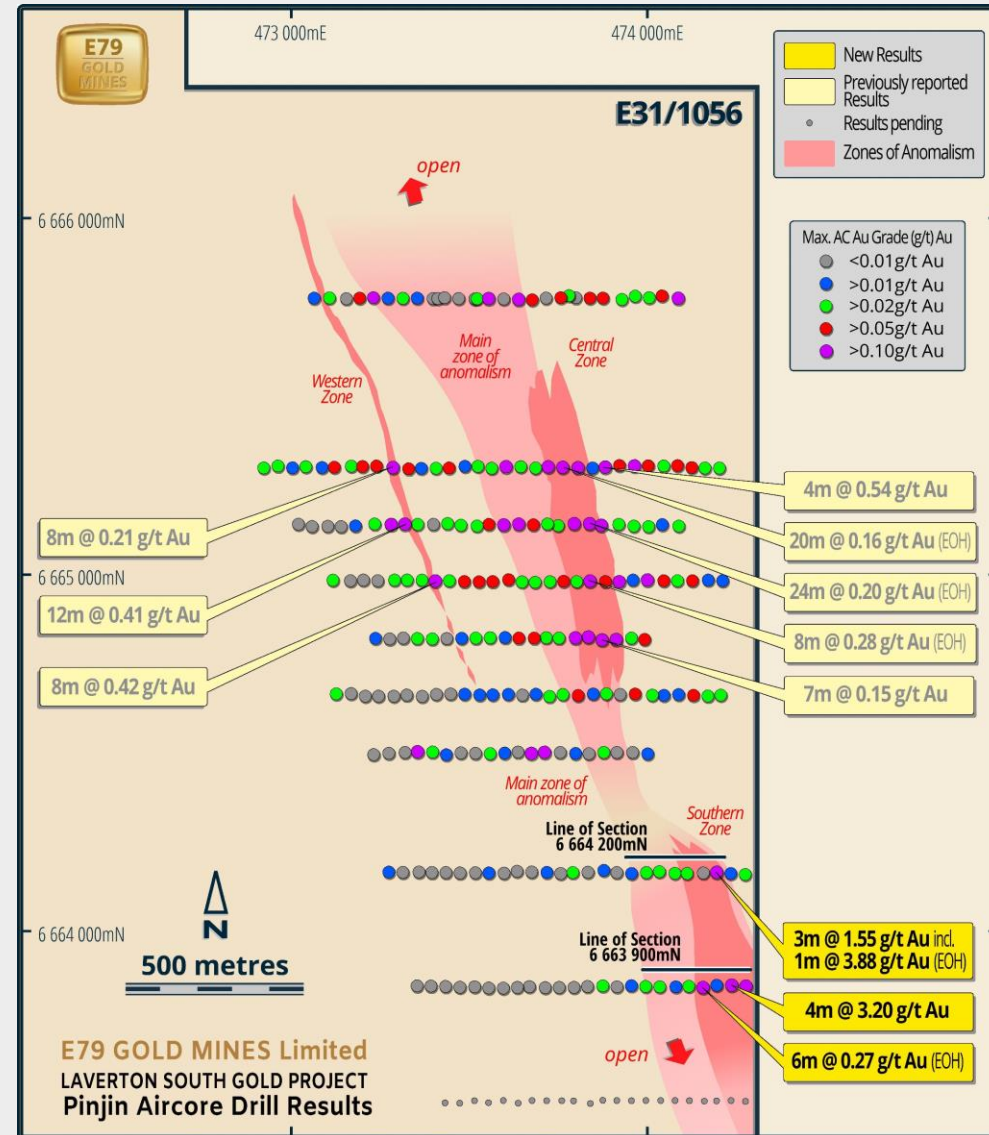
- Results show a 2,600m long zone of anomalous gold
- Gold is found at the base of, and underneath, a regional paleochannel
- Within this anomalous zone are the;
 - Southern Zone
 - Central Zone
 - Western Zone
- Over 21,000m of aircore drilling to date
- Deeper RC drilling imminent



TARGET 3 - SOUTHERN ZONE



- Drilled at 300m line spacing
- Results show gold mineralization below the paleochannel, associated with quartz veining
- 3m @ 1.55 g/t Au from 92m (22LRAC369) including **1m @ 3.88 g/t Au** from 94m to end of hole
- **4m @ 3.20 g/t Au** from 92m (22LRAC394)
- 6m @ 0.27 g/t Au from 80m (22LRAC392) to end of hole
- Target supported by pathfinder elements
- Sits in along an ultramafic/mafic contact
- Deeper RC program planned

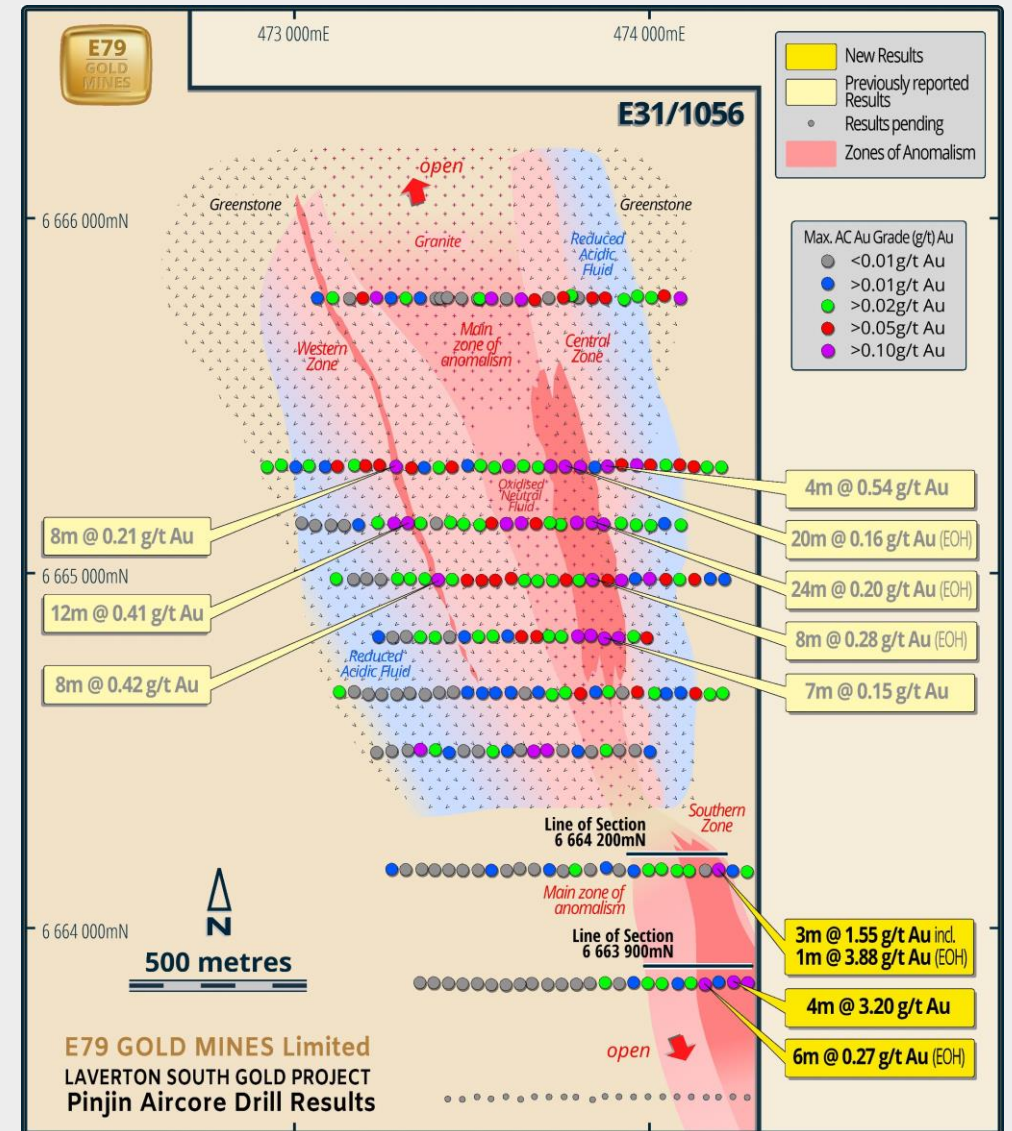


¹Refer to ASX 23 November 2022

TARGET 3 - CENTRAL ZONE



- Drilled at 160m line spacing
- 4 consecutive lines show a linear, 600m long 120m wide zone with thick anomalism to end of hole
 - 20m @ 0.16 g/t Au from 84m¹ to end of hole
 - 24m @ 0.20 g/t Au from 80m² to end of hole
 - 8m @ 0.28 g/t Au from 100m¹ to end of hole
 - 5m @ 0.14 g/t Au from 72m² to end of hole
- Target supported by pathfinder elements and evidence of large scale fluid flow
- Sits in demagnetized zone along a greenstone/granite contact
- Deeper RC program planned



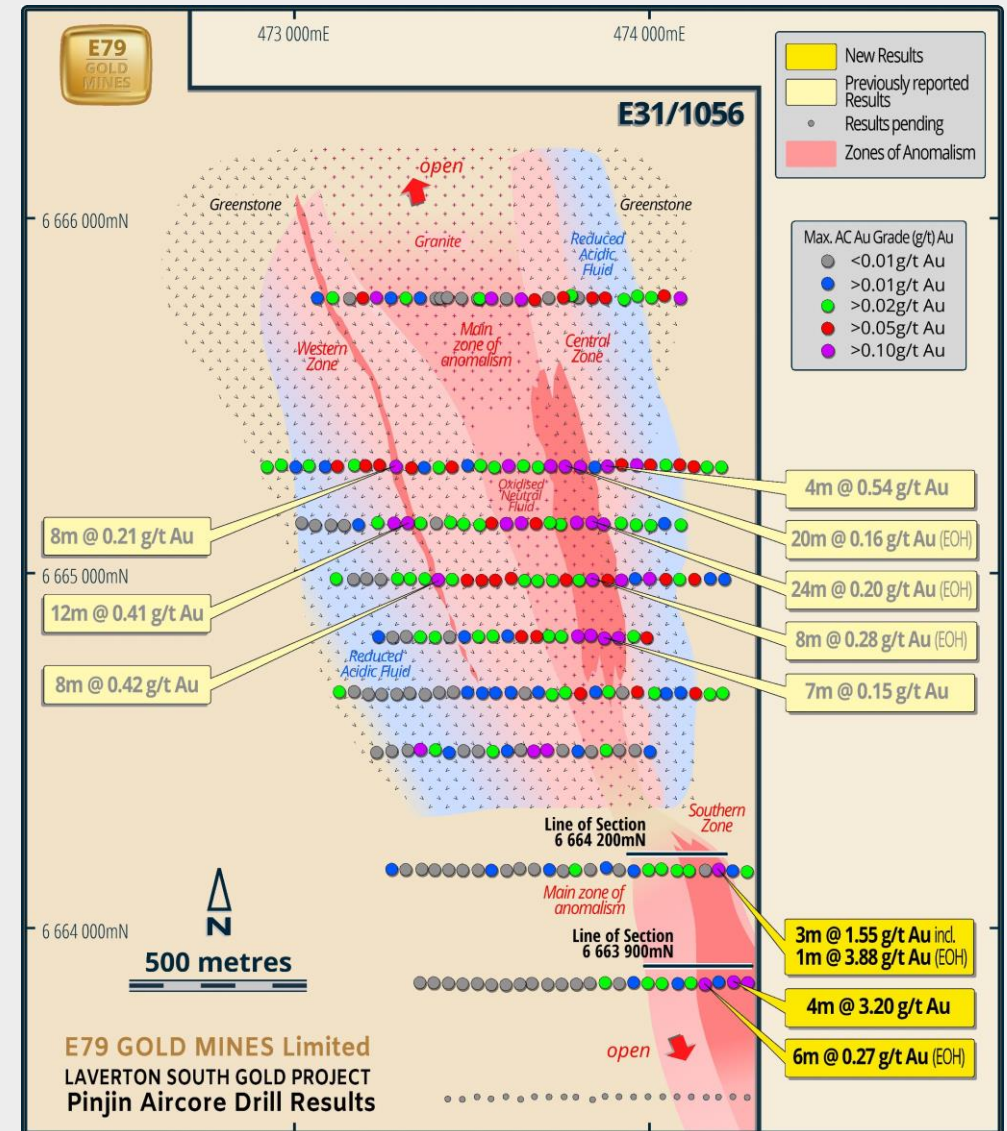
¹Refer to ASX 10 November 2022

²Refer to ASX 7 June 2022

TARGET 3 - WESTERN ZONE



- Drilled to 160m line spacing
- Core is 500m long, 50m wide zone of anomalism. Gold values higher than Central Zone
- Within greenstone, structurally controlled
 - 8m @ 0.21¹ g/t Au
 - 12m @ 0.41² g/t Au
 - 8m @ 0.42¹ g/t Au
- Follow up RC to test this target at depth commencing soon



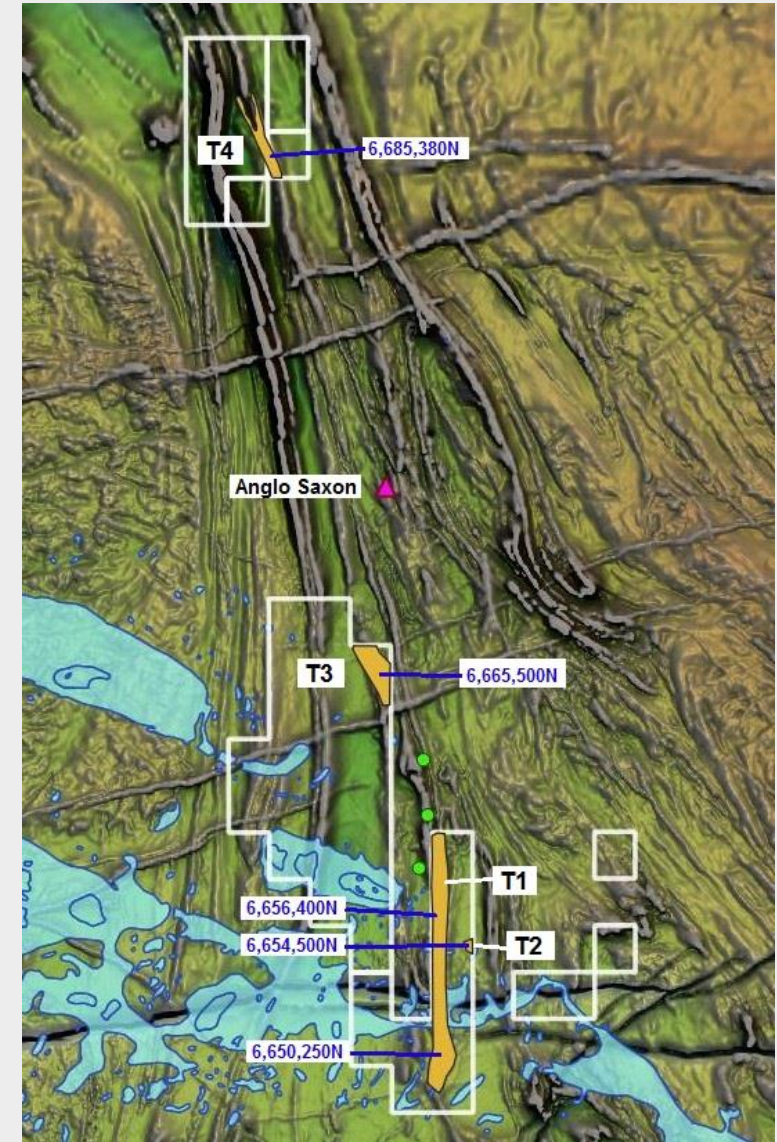
¹Refer to ASX 10 November 2022

²Refer to ASX 7 June 2022

TARGET 4 EAST



- Drilling by previous explorer outlined a 2.5km long zone of anomalous gold
- This zone sits on a domain boundary and extends south through the historic Pinjin Goldfield and north to the historic high grade Patricia open pits
- 95 Aircore holes drilled and awaiting assay
- Drill was designed to drill over prospective zone within the known anomalism and extend to the north

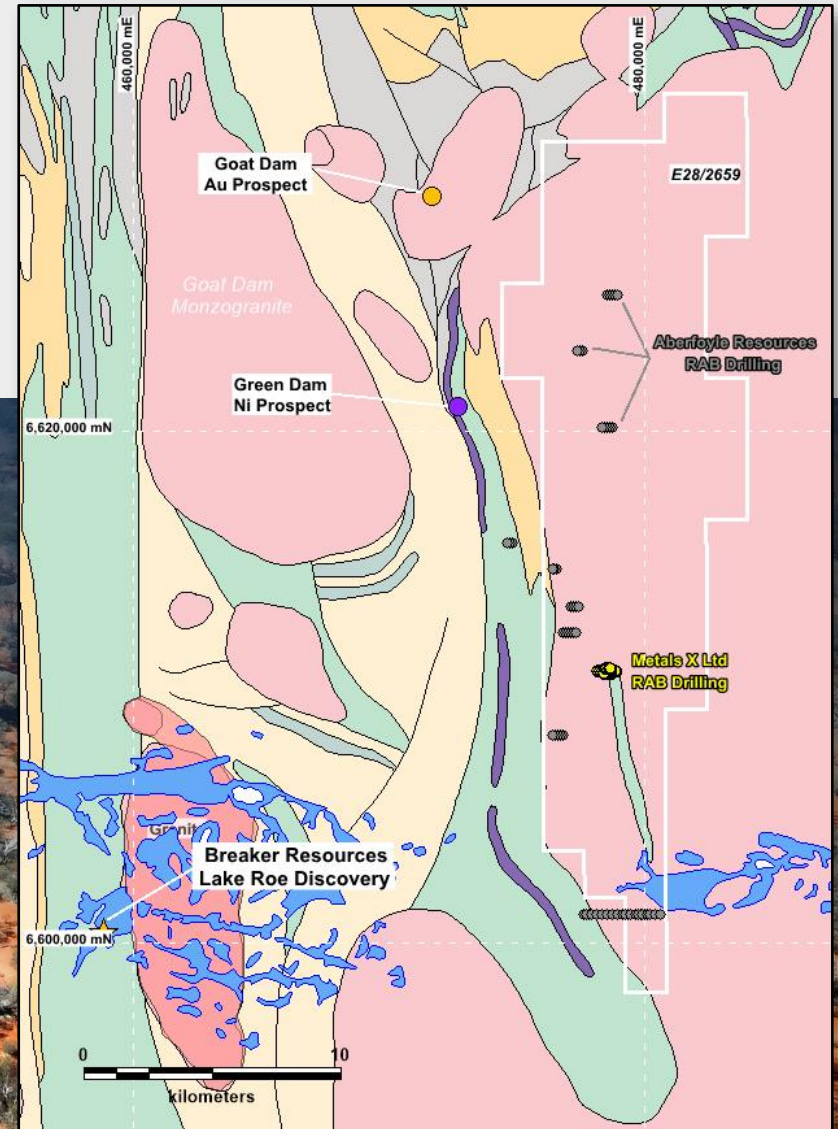
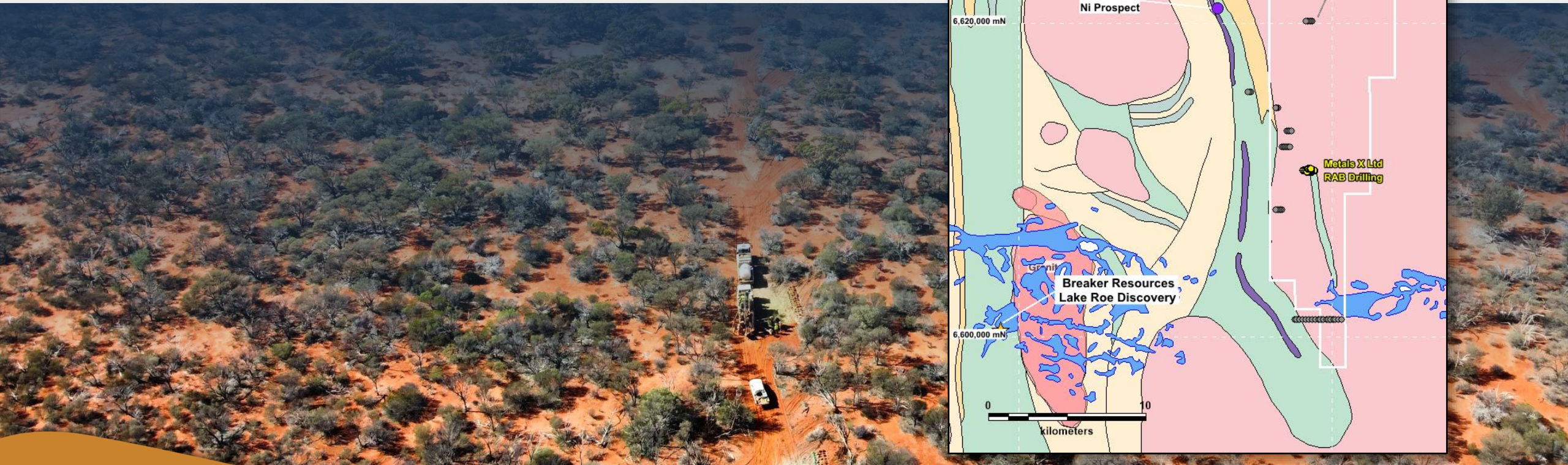


PROJECTS

LAVERTON SOUTH PROJECT – LAKE YINDANA



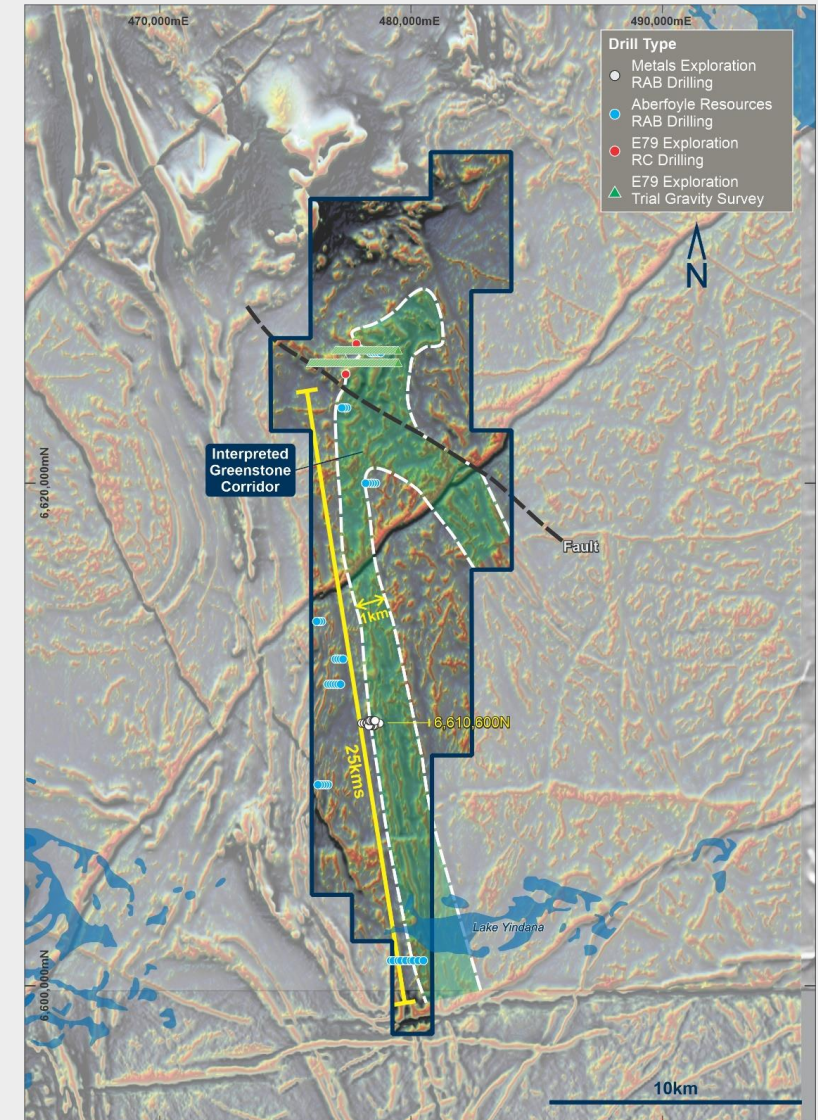
- First-mover opportunity
- GSWA maps show the tenement is less prospective granite (not correct)
- Discouraged historic exploration – only 65 RAB drill holes, huge areas not explored



LAVERTON SOUTH PROJECT – LAKE YINDANA



- Magnetics and recently acquired gravity clearly show that the tenement is underlain by ~25km of greenstones
- This is supported by the limited historic RAB drilling finding various greenstone lithologies:
 - Dolerite
 - Gabbro
 - Gneiss (Rebecca host)
 - Ultramafic (Ni prospective)
 - Rhyolite porphyry
 - Granite



LAVERTON SOUTH PROJECT – LAKE YINDANA



- Magnetism and gravity clearly show that the tenement is underlain by ~25km of greenstones
- Given the distinct lack of previous exploration, effectively E79 has a 'first-mover' opportunity:

'...the largest deposits in any particular search space are usually found early because they generally have the most obvious signatures.'

And '...the key to exploration success is being the first, or very early, into a new search space'.

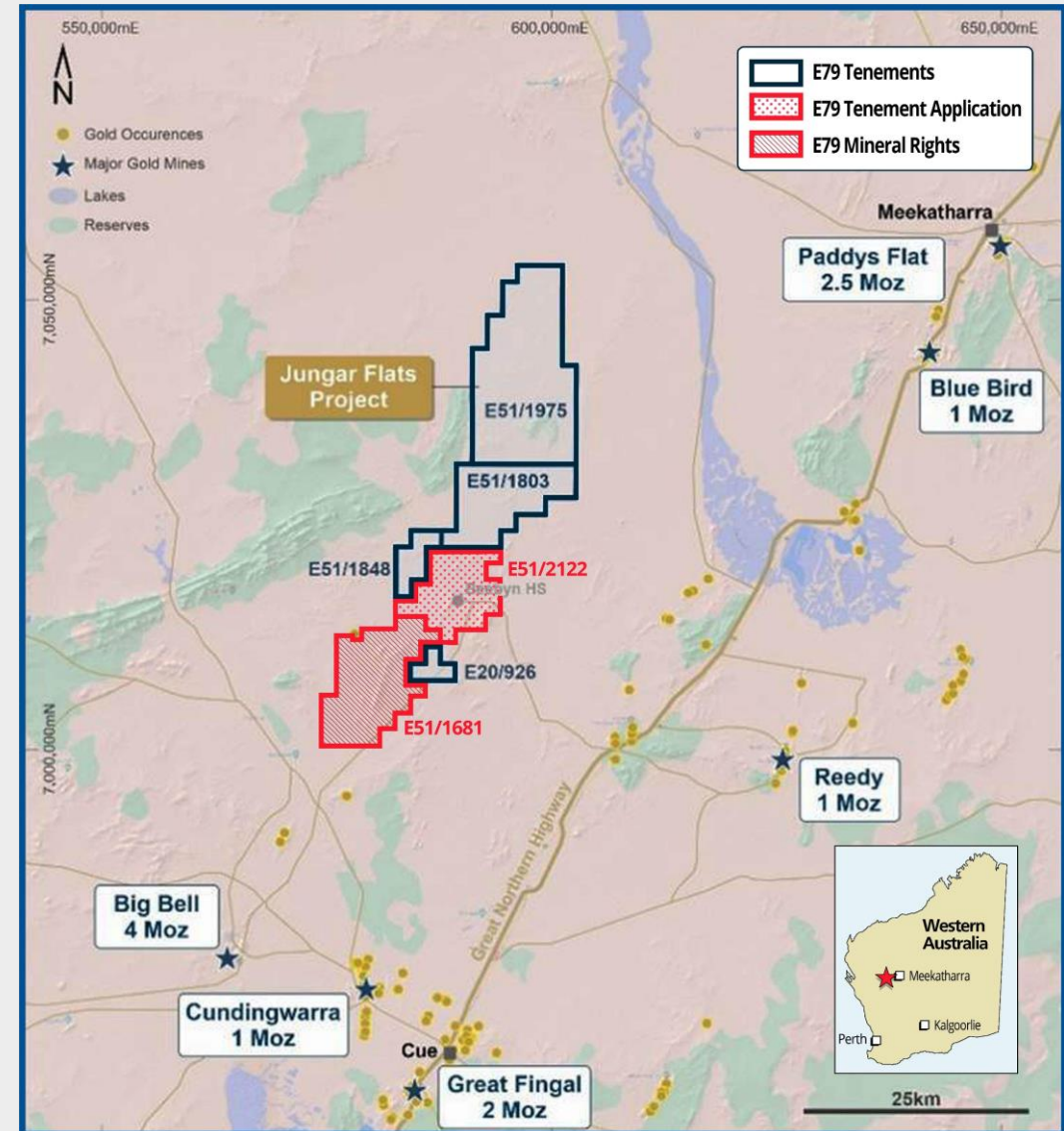
Dr Jon Hronsky

PROJECTS

MURCHISON PROJECT - JUNGAR FLATS



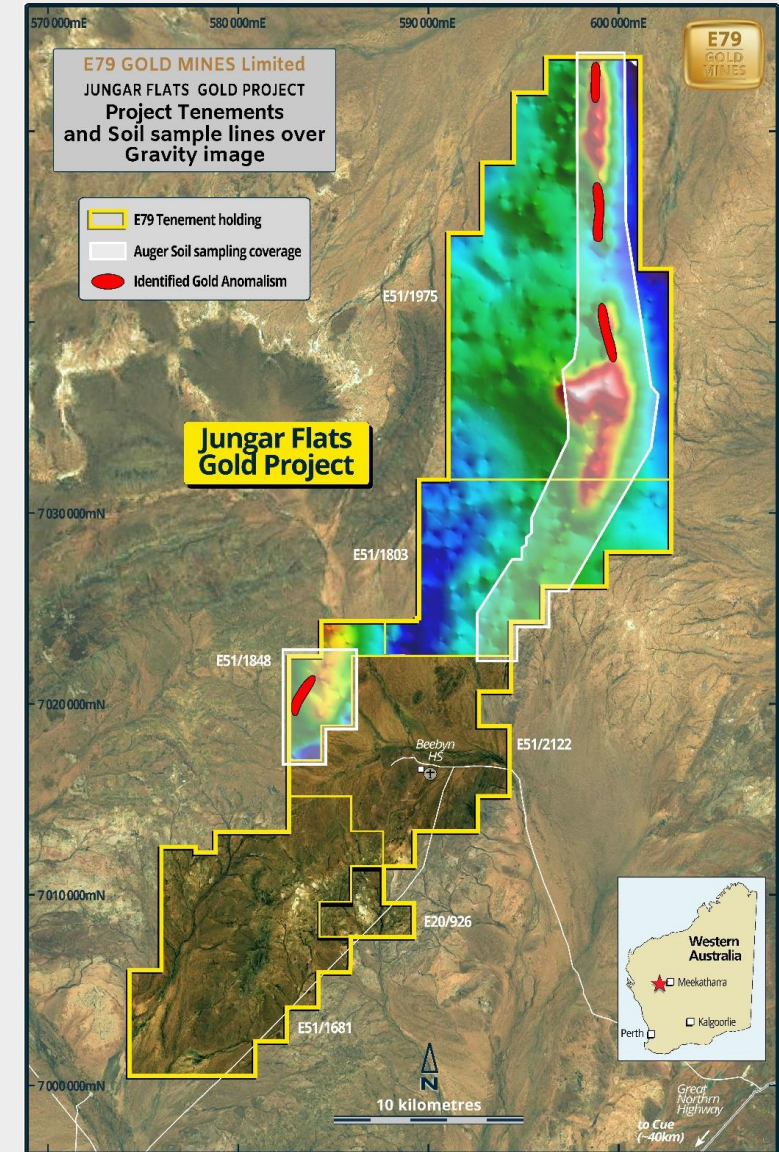
- 541km² of tenure containing early stage exploration targets
- Murchison Goldfields >30 million ounces gold endowment
- ~90km of strike along the Big Bell Shear and associated structures
- New acquisitions to the south which increased our exposure to the Big Bell Shear
- Area is prospective for gold, base metals, platinum group elements, iron-ore



JUNGAR FLATS PROJECT



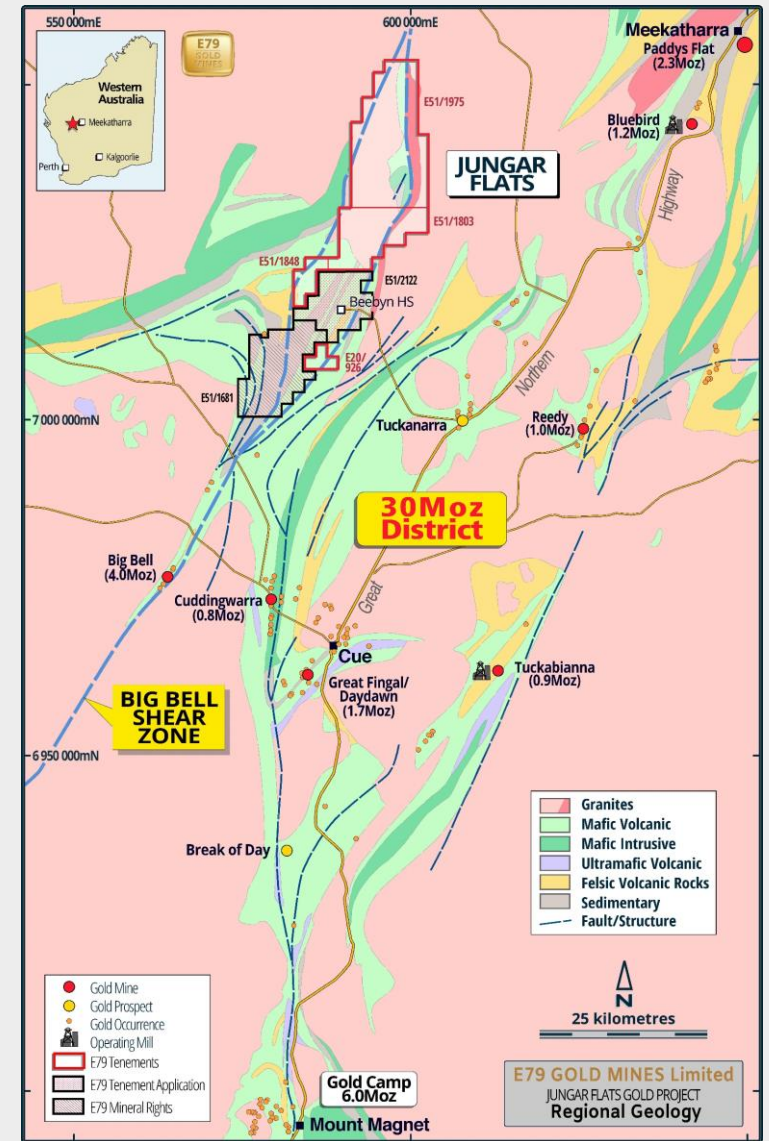
- Large scale gravity survey completed early 2022
- New targets identified
 - Location of the shear and greenstone belt more tightly defined in the north
 - Dolerite intrusion in central part of tenement is more extensive at depth than first thought
- Ultrafine™ analytical method successfully trialed, gold anomalism found at three of four target areas
 - This technique, developed by CSIRO has the ability to identify geochemical anomalism, potentially associated with mineralisation, through the extensive cover in the region



JUNGAR FLATS PROJECT



- Walk-up drill targets on Big Bell Shear Zone include:
 - 6km-long gold anomaly (BHP) – best 6m @ 0.17g/t Au, lack of follow-up (WAMEX Ref A32829)
 - T1975-1,2 & 3 (Newcrest) – best 4m @ 0.61g/t Au (WAMEX Ref A46347)
- Large scale auger program underway to test greenstone belt
- Expected completion by year end



SUMMARY

The Recipe



GOOD MANAGEMENT

Track record of discovery and successful development

- 2008 Explorer of the Year (Integra Mining)
- 2010 Miner of the Year (Integra Mining)
- 2020 Craig Oliver Award Winner (Stavely Minerals)



GOOD STRATEGY

'Money in the ground', applied technology in exploration leading to discovery



GOOD GROUND

Two sizeable projects in prolific 'world-class' greenstone belts



SHAREHOLDER VALUE

A history of delivering for Shareholders



E79
GOLD
MINES

E79 GOLD MINES

Committed to a sustainable future

Thank you

Money in the ground.