



E79 GOLD MINES

Money in the Ground

RIU Presentation 20 February 2025



DISCLAIMER

This presentation contains only an overview of E79 Gold Mines Limited ("E79" or the "Company") and its activities and operations. The contents of this presentation, including matters relating to the geology and exploration potential of the Company's projects, may rely on various assumptions and subjective interpretations which it is not possible to detail in this presentation and which have not been subject to any independent verification.

This presentation contains a number of forward-looking statements. Known and unknown risks and uncertainties, and factors outside of the Company's control, may cause the actual results, performance and achievements of the Company to differ materially from those expressed or implied in this presentation.

To the maximum extent permitted by law, E79 does not warrant the accuracy, currency or completeness of the information in this presentation, nor the future performance of the Company, and will not be responsible for any loss or damage arising from the use of the information.

The information contained in this presentation is not a substitute for detailed investigation or analysis of any particular issue. Current and potential investors should seek independent advice before making any investment decision in regard to the Company or its activities.

The information in this presentation that relates to E79 exploration results is based on information compiled by Mr Ned Summerhayes, a Competent Person who is a member of the Australian Institute of Geoscientists. Mr Summerhayes is a full-time employee, a shareholder and an option holder of the Company. Mr Summerhayes has sufficient experience that is relevant to the style of mineralisation and type of deposit under consideration and to the activity being undertaken to qualify as a Competent Person as defined in the 2012 Edition of the 'Australasian Code for Reporting of Exploration Results, Mineral Resources and Ore Reserves'. Mr Summerhayes consents to the inclusion in the report of the matters based on his information in the form and context in which it appears.

Previously Reported Information: The information in this announcement that references previously reported exploration results is extracted from the Company's ASX market announcements released on the date noted in the body of the text where that reference appears. The previous market announcements are available to view on the Company's website or on the ASX website (www.asx.com.au). The Company confirms that it is not aware of any new information or data that materially affects the information included in the original market announcements. The Company confirms that the form and context in which the Competent Person's findings are presented have not been materially modified from the original market announcements.

CORPORATE



Non-Executive Chair
Chris Cairns

Non-Executive Director
Deborah Lord

Non-Executive Director
Peter Ironside

Chief Executive Officer
Ned Summerhayes

Company Secretary
Amanda Sparks

Board and Management Holding
~12%

\$0.047
Share Price

102,162,634*
Shares on Issue

\$4.80M
Market Capitalisation

\$3.34M
Enterprise Value

\$1.46M*
Cash on Hand
(31 Dec 2024)

40%
Top 20 Shareholders

OVERVIEW



GOOD MANAGEMENT

Track record of discovery and successful development

- 2008 Explorer of the Year (Integra Mining)
- 2010 Miner of the Year (Integra Mining)
- 2020 Craig Oliver Award Winner (Stavelly Minerals)
- 2023 AUSIMM Presidents Award (Deborah Lord)



GOOD STRATEGY

'Money in the ground', applied technology in exploration leading to discovery. To continually assess opportunities that fit the E79 strategy



GOOD GROUND

Two sizeable projects in prolific 'world-class' locations, prospective for gold and copper



SHAREHOLDER VALUE

A history of delivering for Shareholders

PROJECTS

THREE EXPLORATION PROJECTS IN AUSTRALIA

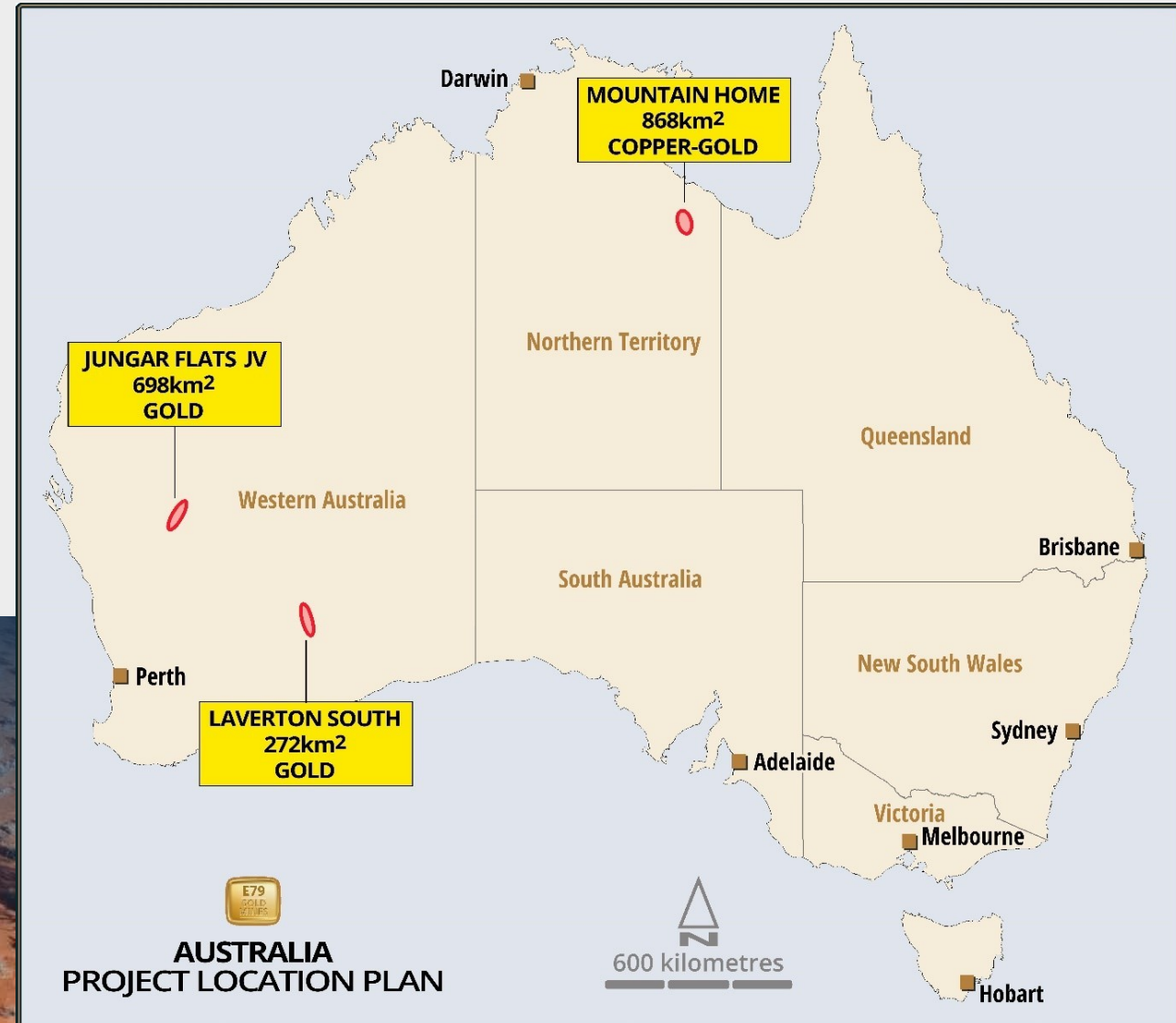


272km² of tenure in the Laverton Tectonic Zone - one of the world's most prolific gold belts ~30Moz

868km² of tenure within the endowed McArthur Basin, prospective for copper and gold

Recent agreement to JV out Murchison project¹, 698km² of tenure in the Murchison Goldfield, to focus on near-term discovery opportunities In the Laverton South (Au) and Mountain Home (Cu-Au) Projects

¹ Refer to E79 Gold Mines ASX announcement 14 February 2025





E79

GOLD
MINES

Laverton South Project (Au)

PROJECTS

LAVERTON SOUTH GOLD PROJECT



Relative to the north-central portions of the belt hosting a number of multi-million ounce gold deposits, the southern portion is under-explored

Deposit	Historical Production			Resources						Endowment Ounces
				Meas & Ind			Inf			
	Tonnes (kt)	Grade	Ounces	Tonnes (kt)	Grade	Ounces	Tonnes (kt)	Grade	Ounces	
Granny Smith ¹	-	-	5,100,000	3,581	3.77	434,000	2,067	3.44	229,000	5,763,000
Wallaby ²	-	-	4,500,000	29,990	6.20	5,977,000	8,985	4.41	1,273,000	11,750,000
Sunrise Dam ³	-	-	6,700,000	41,090	2.02	2,670,000	12,550	2.38	960,000	10,330,000
Red October ⁴	1,700	6.1	342,000	324	4.6	48,000	99	15.3	49,000	439,000
Deep South ⁵	2,077	3.1	209,236	1,897	2.7	162,000	1,031	2.3	78,000	449,236
Anglo Saxon ⁶	673	2.4	49,694	449	6.9	99,000	347	5.2	58,000	206,694
Rebecca ⁷	-	-	-	13,600	1.5	640,000	6,800	0.9	200,000	840,000
Duchess ⁸	-	-	-	4,150	0.9	125,000	2,700	0.8	75,000	195,000
Lake Roe ⁹	-	-	-	15,863	1.53	778,000	16,066	1.8	906,000	1,684,000
Rowes Find ¹⁰	-	-	-	-	-	-	148	3.5	17,000	17,000
										31,673,930



1. Production – Icenil Gold Limited Prospectus, 2021, Independent Geologist Report, page 130. Resources – Gold Fields 2020 Mineral Resource & Reserve Supplement to the Integrated Annual Report (IAR).
2. Production – Gold Fields Annexure to the 2020 Mineral Resources and Reserves Supplement. Resources – Gold Fields 2020 Mineral Resource & Reserve Supplement to the IAR.
3. Production – Icenil Gold Limited, Independent Geologist Report, 14 Mile Well Gold Project, page 14. Resources – AngloGold Ashanti 2019 Mineral Resource & Reserve Statement.
4. Production – Matsa Resources Limited ASX Announcement, 28 March 2018. Resources – Matsa Resources Limited 2020 Annual Report.
5. Production – Saracen Annual Reports 2017, 2018, 2019. Resources – Saracen Annual Report 2020.
6. Production – Hawthorn Resources Limited 2020 Annual Report. Resources – Hawthorn Resources Limited Mineral Resource Update, 31 January 2020.
7. Resources – Apollo Consolidated Limited 2020 Annual Report.
8. Resources – Apollo Consolidated Limited 2020 Annual Report.
9. Resources – Breaker Resources Limited 2020 Annual Report.
10. Resources – Black Cat Syndicate Limited 2020 Annual Report.

PROJECTS

LAVERTON SOUTH GOLD PROJECT



- Pinjin - 100% E79 Gold owned
- Lake Yindana - 100% E79 Gold owned



Rebecca Gold Project

+1.2 Moz resource
(Ramelius Resources 12/4/22)



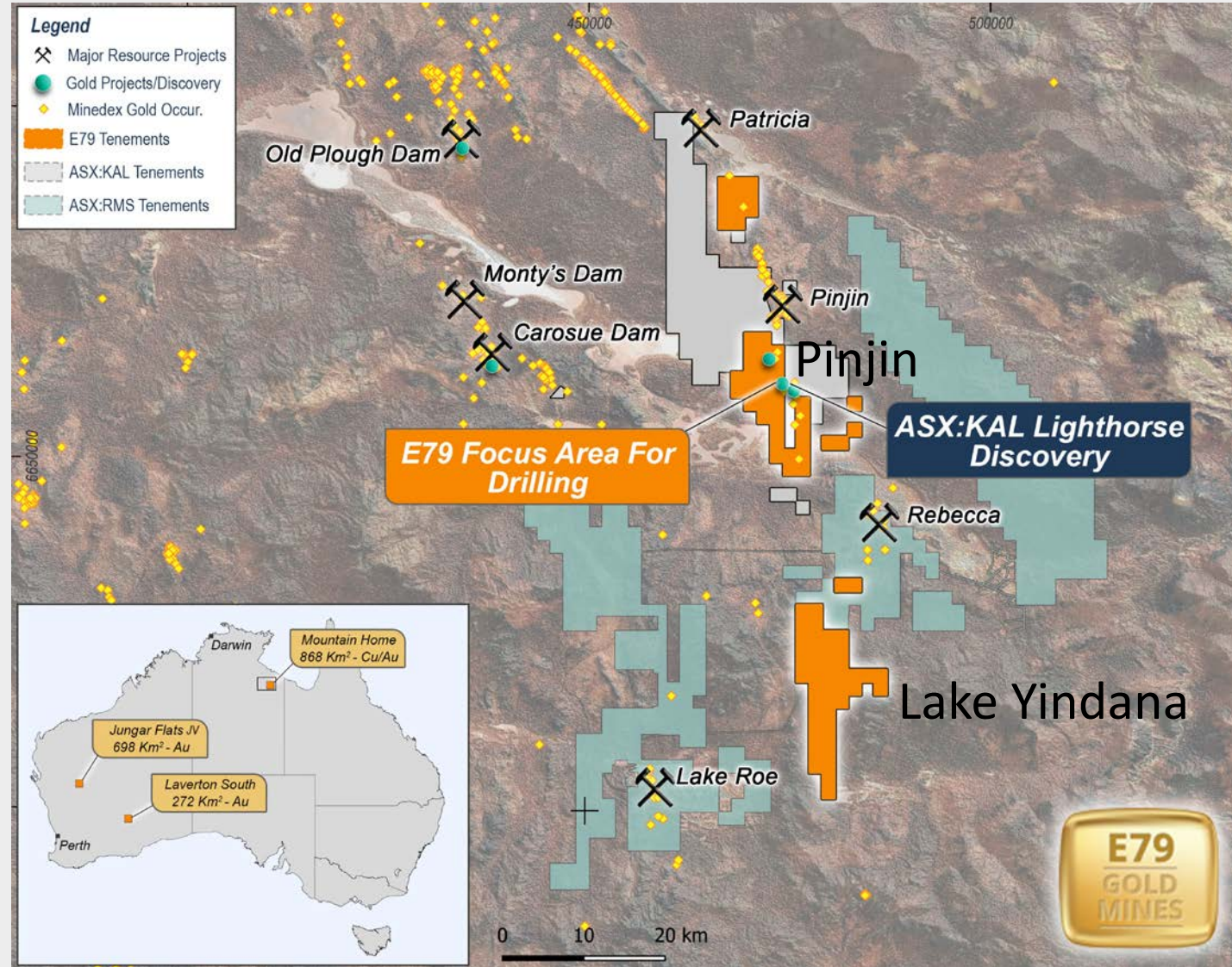
Lake Roe Gold Project

+1.7 Moz resource
(Ramelius Resources 20/3/23)



Carosue Dam

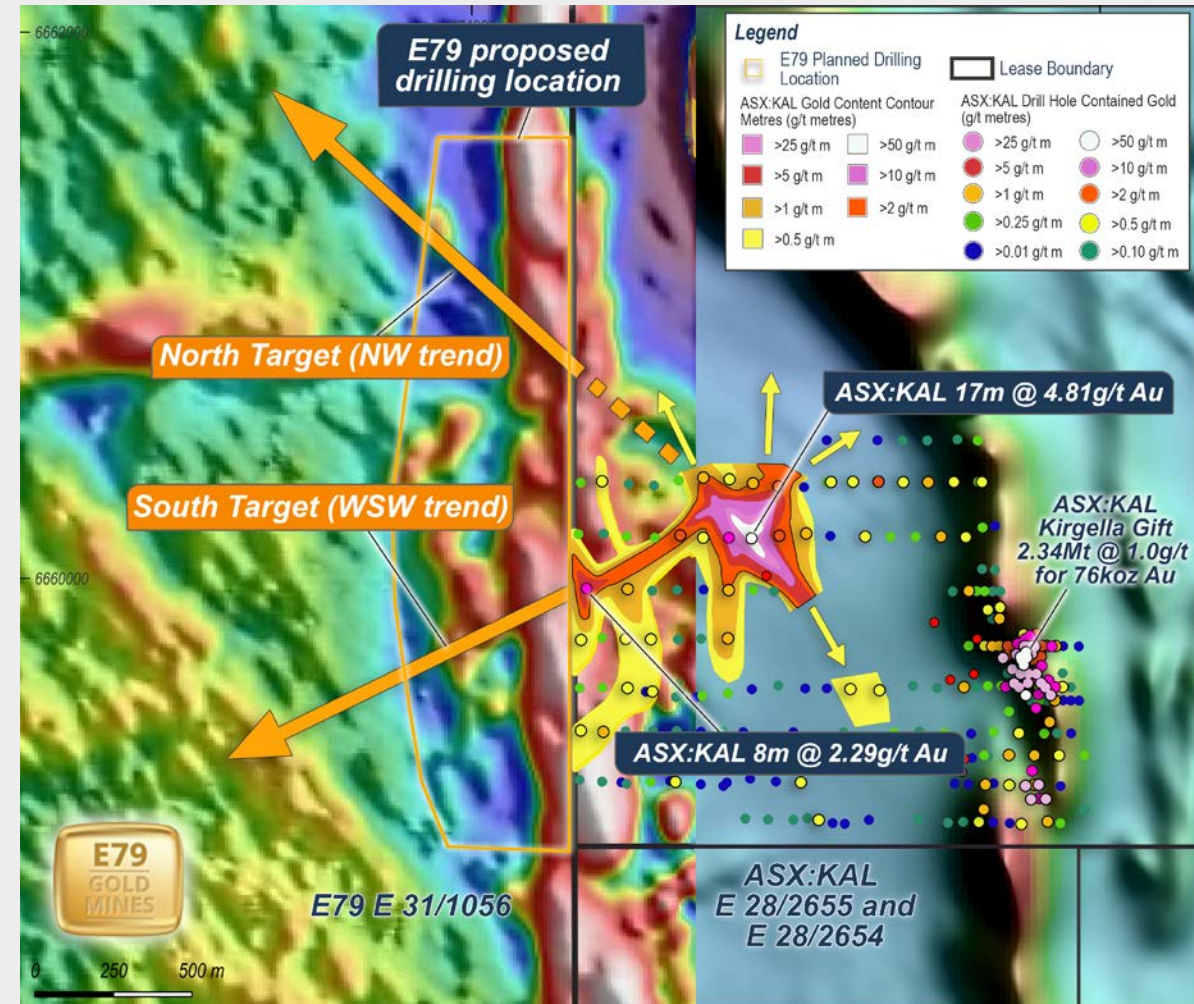
+4 Moz endowment
(Northern Star 3/5/22)



PINJIN: RECENT ADVANCES



- Emerging greenfields discovery on adjacent tenement by Kalgoorlie Gold Mining Company Limited (**KalGold**, **ASX:KAL**)
- The new 'Lighthouse' discovery sits 50m to 550m from E79 tenement boundary
- Structural trends, host stratigraphy and drill targets strike towards E79 Gold-owned tenements, where there has been no drilling to date
- Wide spaced regional aircore drilling (200m x 80m) by KalGold intersected thick high-grade zones of gold mineralisation including;
 - 8m @ 2.29g/t Au from 60m (KGAC24045)¹; and
 - 17m @ 4.81g/t Au from 48m to end of hole (KGAC24152)²
- **Aircore drilling to commence in March to test these newly identified mineralised structures on E79 tenements – no previous drilling with 1.5km**



For Kiregella Gift Inferred Resource Refer to Kalgoorlie Gold Mining ASX Announcement 25 July 2024

¹ Refer to Kalgoorlie Gold Mining ASX Announcement 18 December 2024

² Refer to Kalgoorlie Gold Mining ASX Announcement 7 February 2025

PINJIN: TARGETING CRITERIA



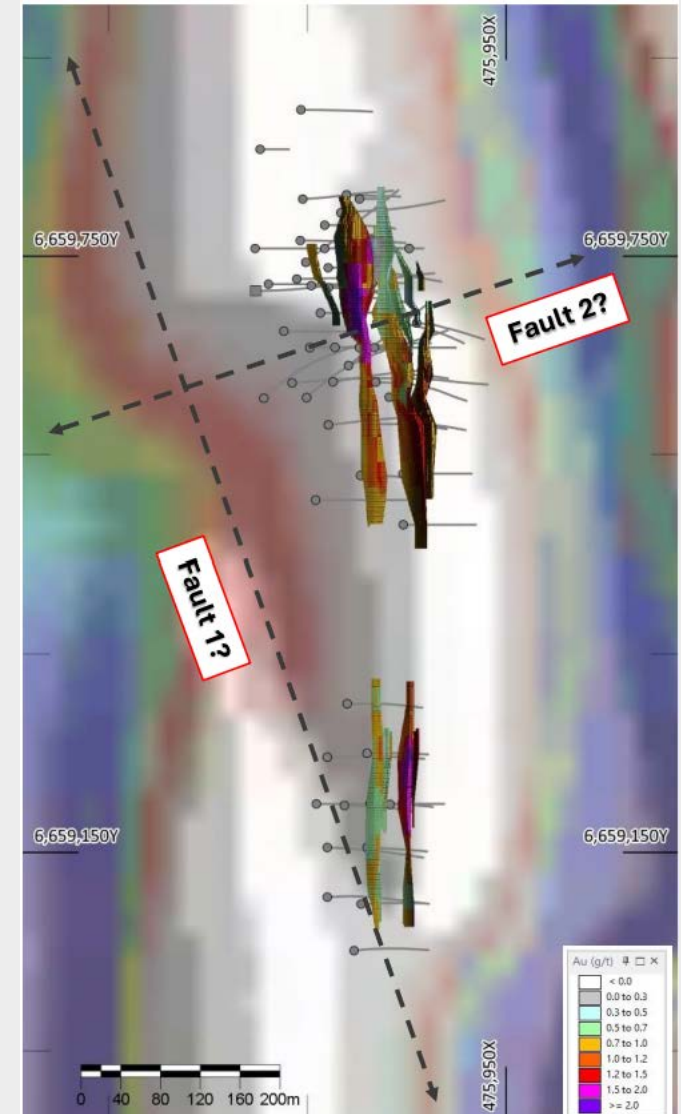
- The role of structure in gold deposition

- Kirgella Gift
 - Structural offset in eastern magnetic dolerite
 - Inferred Resource of 1.81 Mt @ 1.0 g/t for 58,500oz Au¹

- Providence
 - Structural offset in eastern magnetic dolerite
 - Inferred Resource of 0.53 Mt @ 1.1 g/t for 17,900oz Au¹

- Lighthouse
 - Cross Cutting Structures
 - Demagnetisation zone
 - Gold deposition

¹ Refer to Kalgoorlie Gold Mining ASX Announcement 25 July 2024



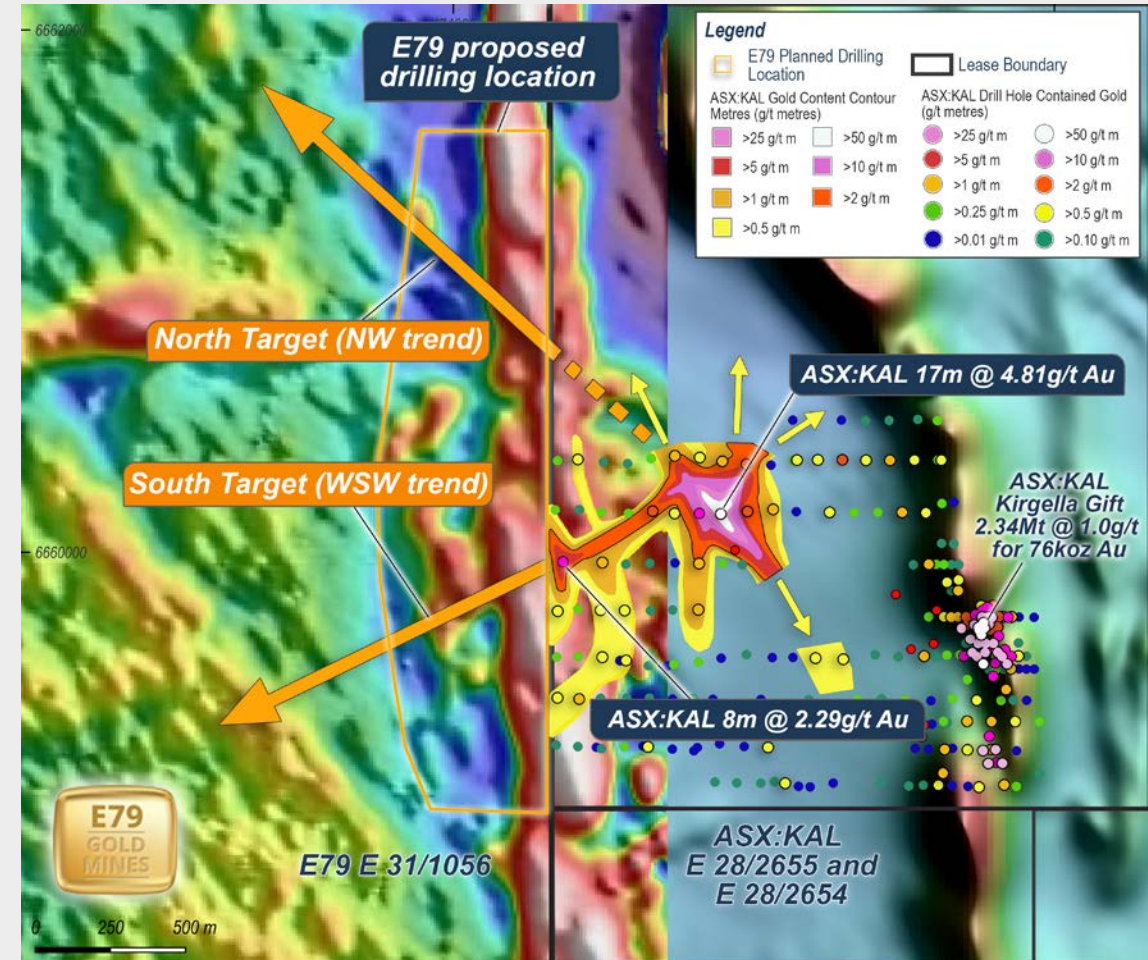
(Reproduced from KalGold (ASX:KAL) announcement 25 July 2024.)

PINJIN: Lighthouse



- Gold Target
 - NW Faults
 - Emerging Lighthouse discovery along strike, 17m @ 4.81 g/t Au¹
 - No drilling on E79 Tenement
- Gold Target
 - WSW Faults
 - KalGold 8m @ 2.29 g/t Au¹ 50m along strike
 - No drilling on E79 Tenement
- Gold Target
 - Cross cutting faults
 - Structural Repeats
 - No drilling on E79 Tenements

¹ Refer to Kalgoorlie Gold Mining ASX Announcement 7 February 2025



Composite image of high res magnetics (left), regional magnetics (right) with KalGold Image over the top (Lighthouse) from KalGold 7 Feb 2025 ASX



E79
GOLD
MINES

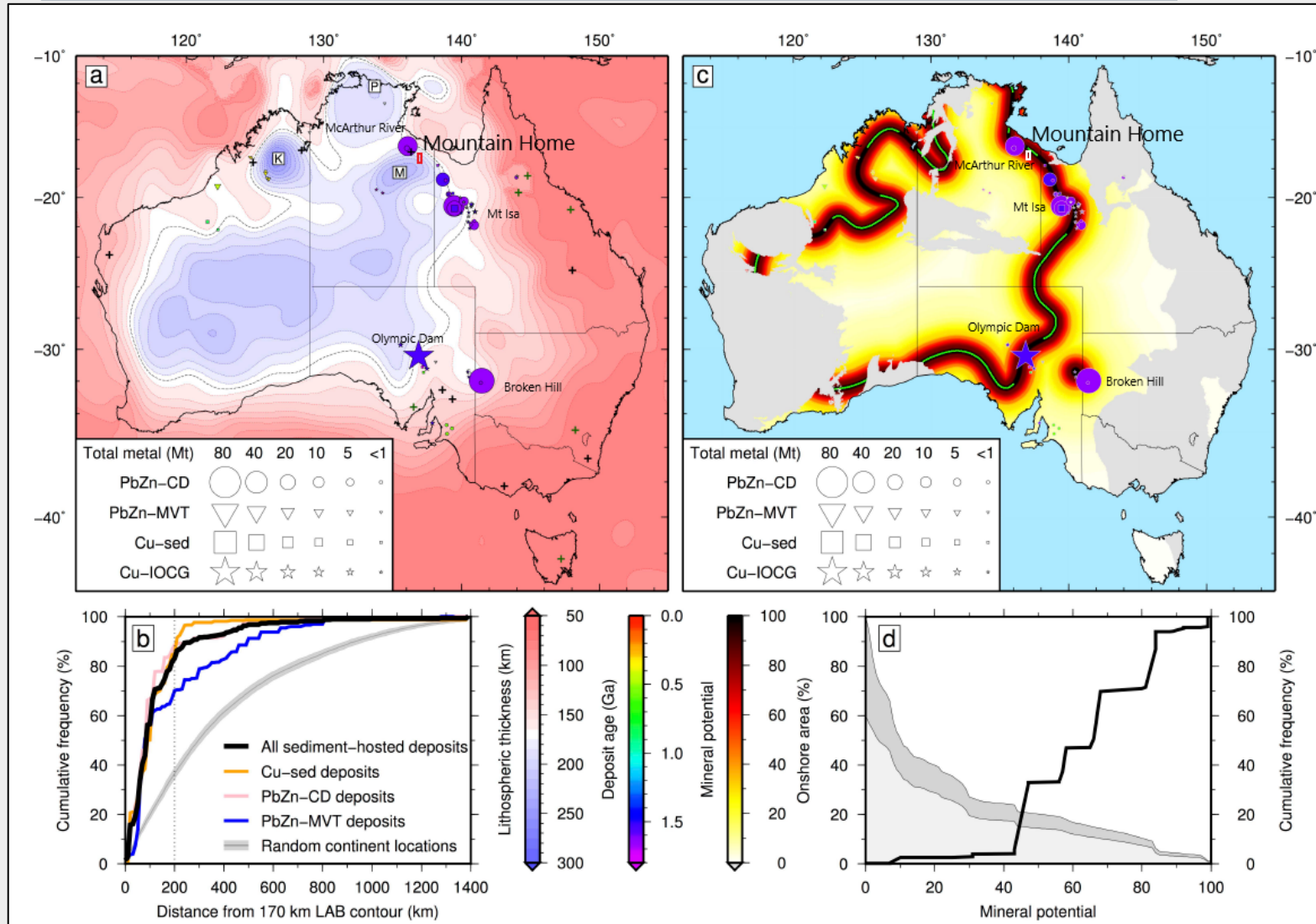
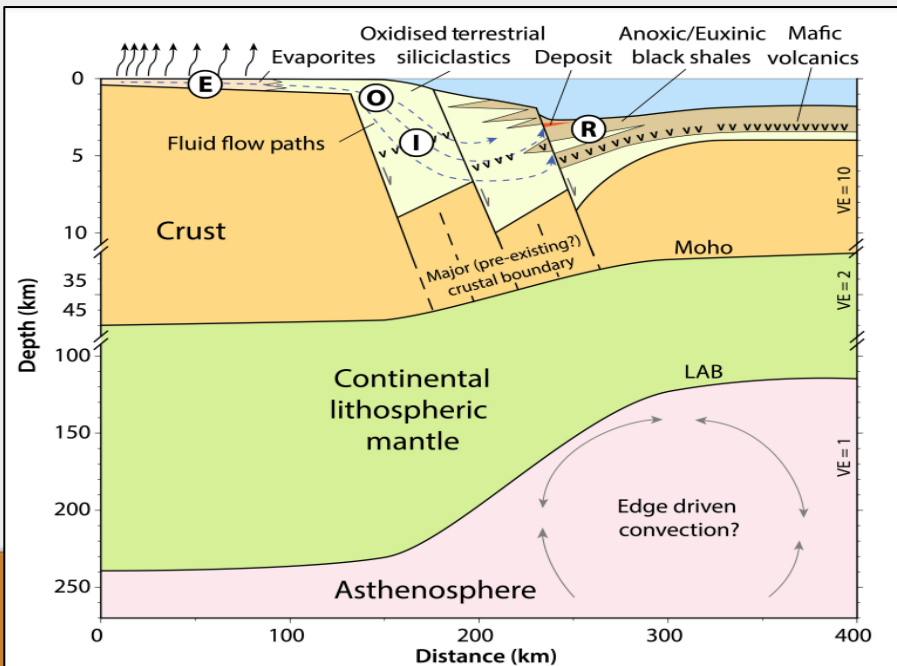
Mountain Home Project (Cu-Au)

MOUNTAIN HOME PROJECT



Research by Geoscience Australia has linked Australia's large sedimentary base metal deposits and IOCG base metals deposits via LAB

The LAB is an Australia wide feature where research indicates that step changes in the depth of lithosphere may be controlling mechanism to form super-large base metals deposits



Czarnota et al., 2020. Minerals on the edge: sediment-hosted base metal endowment above steps in lithospheric thickness. Exploring for the Future: Extended Abstracts.

MOUNTAIN HOME PROJECT

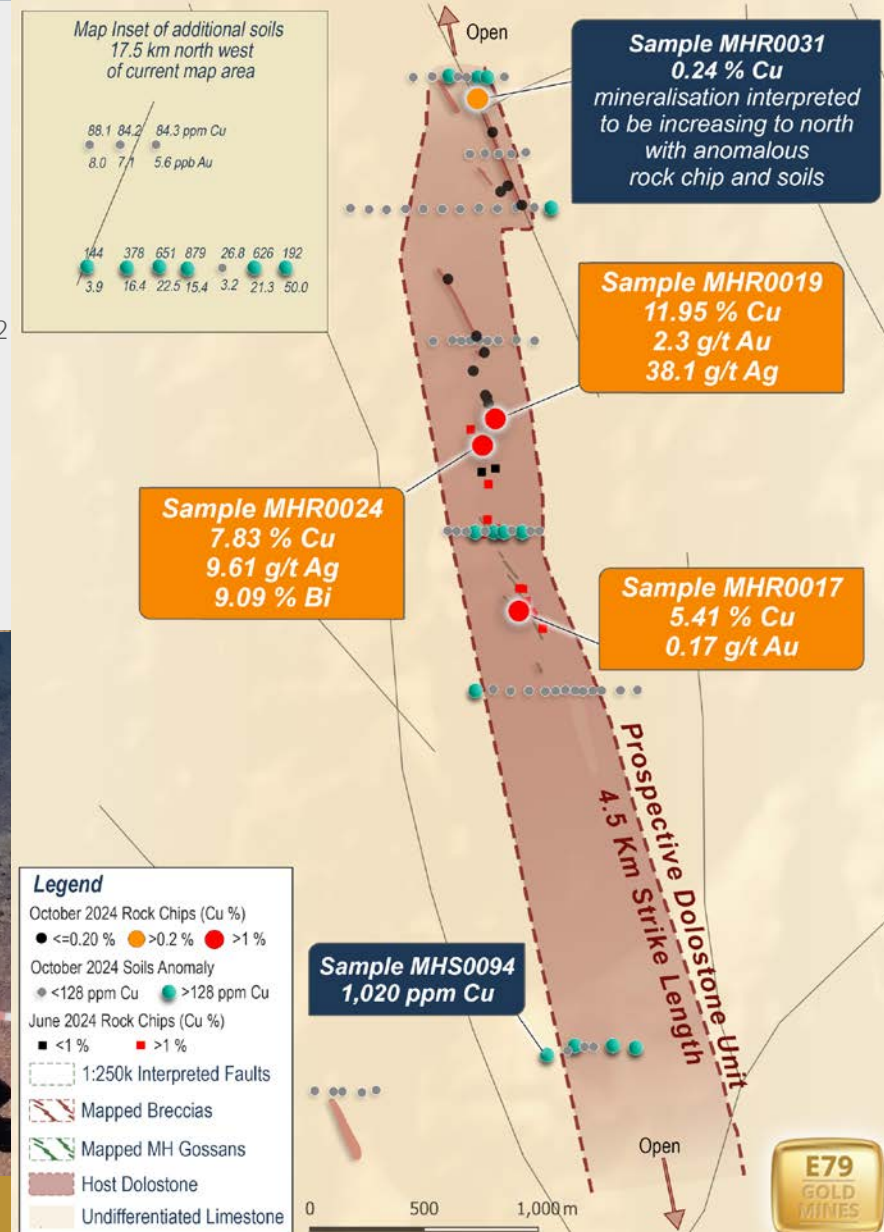


Early-stage copper and gold exploration with 868km² of tenure within the endowed McArthur Basin (NT)

High grade rock-chip samples over the MH Gossan, with copper values including¹; **45.5%**, **39.8%**, **38.4%** and **30.0%** copper. Gold values including **11.75 g/t**, **1.72 g/t**, **1.33 g/t Au**. Bismuth up to **9.09%**²

Prospective host dolostone currently 4.5km long, potential for up to 8km long

1. Refer to E79 ASX Announcement 26 July 2024
 2. Refer to E79 ASX Announcement 20 November 2024

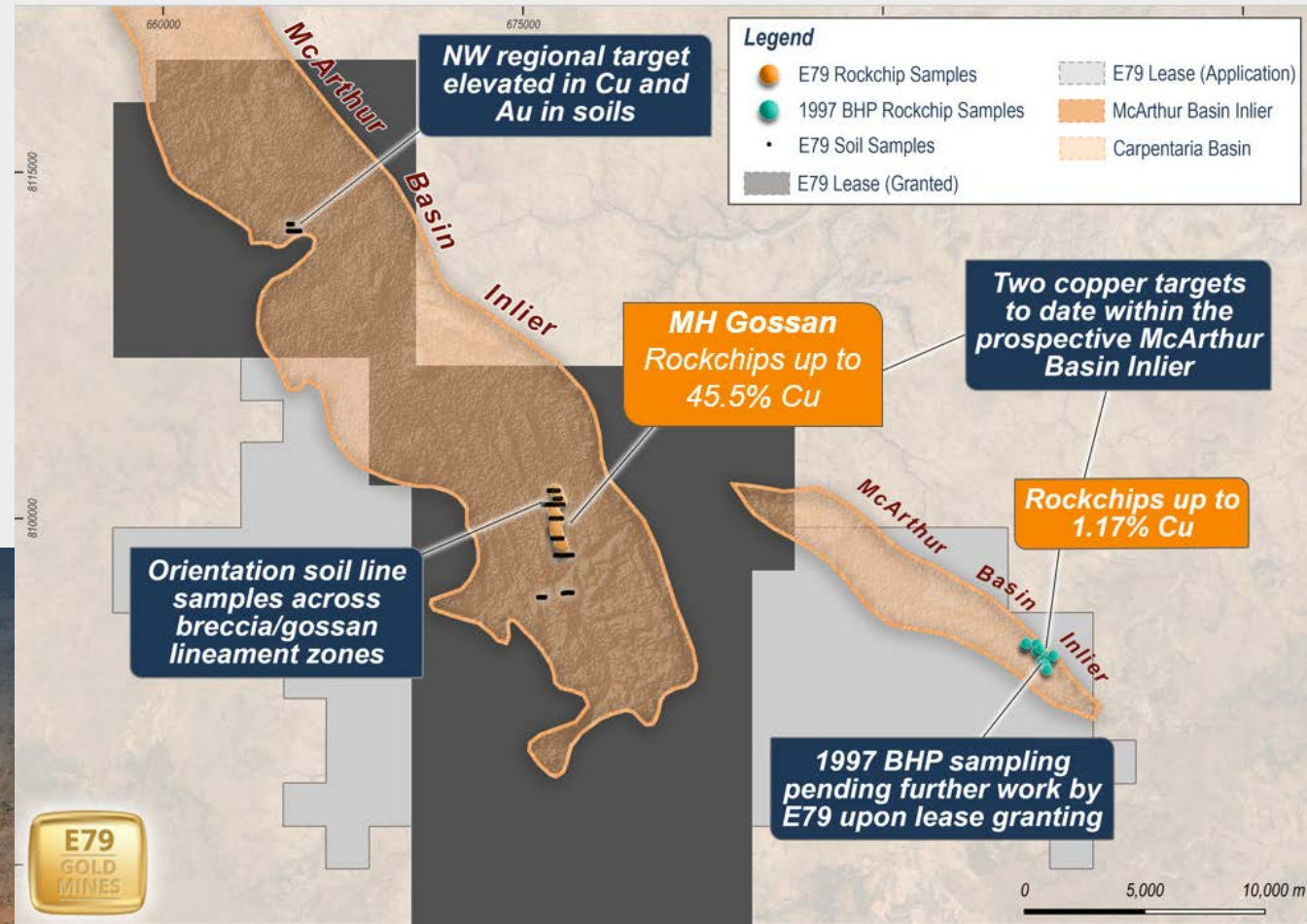


PROJECTS

MOUNTAIN HOME PROJECT

Clear pathway to project advancement

- Environmental Licence – Approved
- Heritage Licence – Submitted
- Drill Program – Planning Underway for upcoming dry season





E79
GOLD
MINES

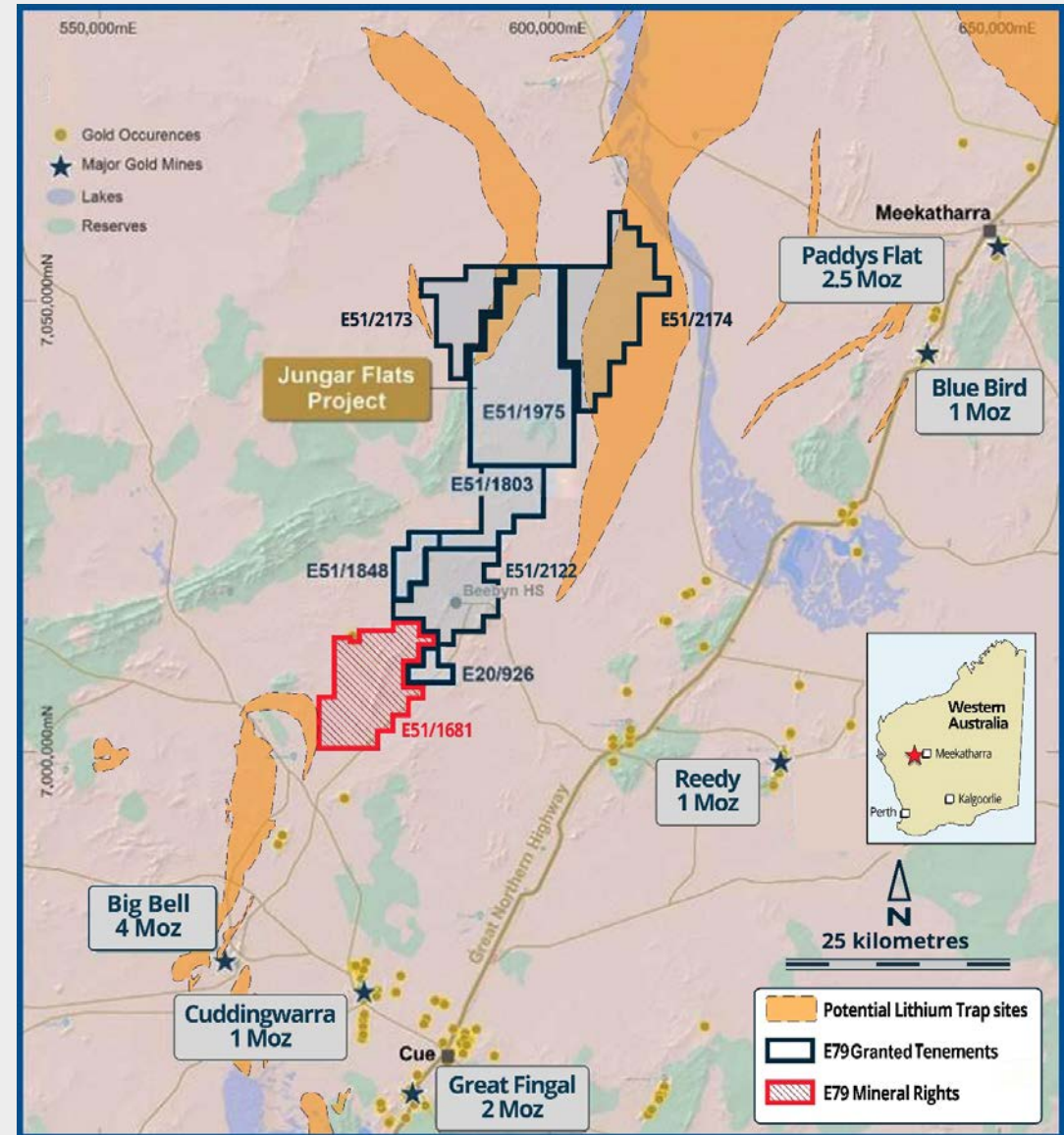
Jungar Flats Project (Au)

MURCHISON PROJECT - JUNGAR FLATS



- E79 has recently entered into an Earn-In and Joint Venture agreement with neighbouring Scorpion Minerals Limited¹ to farm out the Murchison Project
- This agreement allows E79 to technically and financially focus on its near-term discovery opportunities at the Laverton South(Au) and Mountain Home(Cu-Au) Projects while still being exposed to exploration upside at the Jungar Flats Project

¹ Refer to E79 Gold ASX Announcement 14/02/2025



EARLY-STAGE EXPLORATION PHILOSOPHY



Given the distinct lack of previous exploration, effectively E79 has a 'first-mover' opportunity in the exploration portfolio:

- No drilling in E79 tenure proximal to the Lighthouse gold discovery (ASX:KAL)
- No drilling at the Mountain Home IOCG Cu-Au Project

'...the largest deposits in any particular search space are usually found early because they generally have the most obvious signatures.'

And '...the key to exploration success is being the first, or very early, into a new search space'.

Dr Jon Hronsky

SUMMARY



GOOD MANAGEMENT

Track record of discovery and successful development

- 2008 Explorer of the Year (Integra Mining)
- 2010 Miner of the Year (Integra Mining)
- 2020 Craig Oliver Award Winner (Stavely Minerals)
- 2023 AUSIMM Presidents Award (Deborah Lord)



GOOD STRATEGY

'Money in the ground', applied technology in exploration leading to discovery. To continually assess opportunities that fit the E79 strategy.



GOOD GROUND

Two sizeable projects in prolific 'world-class' greenstone belts



SHAREHOLDER VALUE

A history of delivering for Shareholders



E79
GOLD
MINES

E79 GOLD MINES

Committed to a sustainable future

Thank you

Money in the ground