






## Laverton South Aircore Drilling Update

Aircore drill program is in-progress testing potential extensions to an emerging gold discovery on E79 Gold's tenement boundary with Kalgoorlie Gold Mining Ltd (KalGold)

-  A 110-hole, ~7,000m aircore drilling program is in-progress at the Laverton South Gold Project.
-  The program is designed to target structural extensions with similar geology to the emerging Lighthouse gold discovery, made by KalGold (ASX: KAL) on an adjoining tenement.
-  Recently announced drilling results by KalGold have returned thick, shallow zones of gold mineralisation, with results including<sup>1,2</sup>:
  - 8m @ 2.29g/t Au from 60m (KGAC24045) – located ~40m from the E79 Gold/KalGold tenement boundary; and
  - 17m @ 4.81g/t Au from 48m (KGAC24152) – ~550m from the E79 Gold/KalGold tenement boundary.
-  As of 31 March, 29 aircore drill holes (26% of plan) have been completed with the initial batch of assay results anticipated to be received mid-April. Another sample batch will be delivered to the laboratory today.
-  A project-wide review of geophysical data is underway to identify additional drill targets.

---

West Australian-based explorer E79 Gold Mines Limited (ASX: E79) ('E79 Gold' or 'the Company') is pleased to advise that a major, targeted aircore drilling program

---

<sup>1</sup> Refer to Kal Gold ASX Announcement 18 December 2024

<sup>2</sup> Refer to Kal Gold ASX Announcement 7 February 2025

### ASX Code: E79

Shares on issue: 127.7M

Market capitalisation: \$5.5M

Cash: \$1.46M (31 December 2024)

ABN 34 124 782 038

### Head Office

168 Stirling Hwy

Nedlands, Western Australia 6009

T: +61 8 9287 7625

E: info@e79gold.com.au W: e79gold.com.au

is making good progress at its Laverton South Gold Project (Figure 1) in Western Australia, having completed 29 of a planned 110-hole program for 2,253m drilled to date of the ~7,000m initial program.

**E79 Gold CEO, Ned Summerhayes, said:** *“We are excited to be well into our drilling program at Laverton South. The emerging Lighthouse discovery by KalGold starts just 40m from our tenement boundary and has never been drill tested on the E79 Gold side of the tenement. The Lighthouse prospect sits in an area of structural complexity, with a number of potential extensions that continue along interpreted structures into our tenure – which is being tested by the current drilling program.”*



**Figure 1.** Image of the Aircore Drill Rig operating as part of the current drill program.

## Laverton South Projects

### Pinjin (100%) and Lake Yindana (100%)

The Laverton South Project, with an area of 272km<sup>2</sup>, covers a southern portion of the Laverton Tectonic Zone ('LTZ') approximately 130km east-northeast of Kalgoorlie, within the major gold producing Archean Yilgarn Craton of Western Australia.

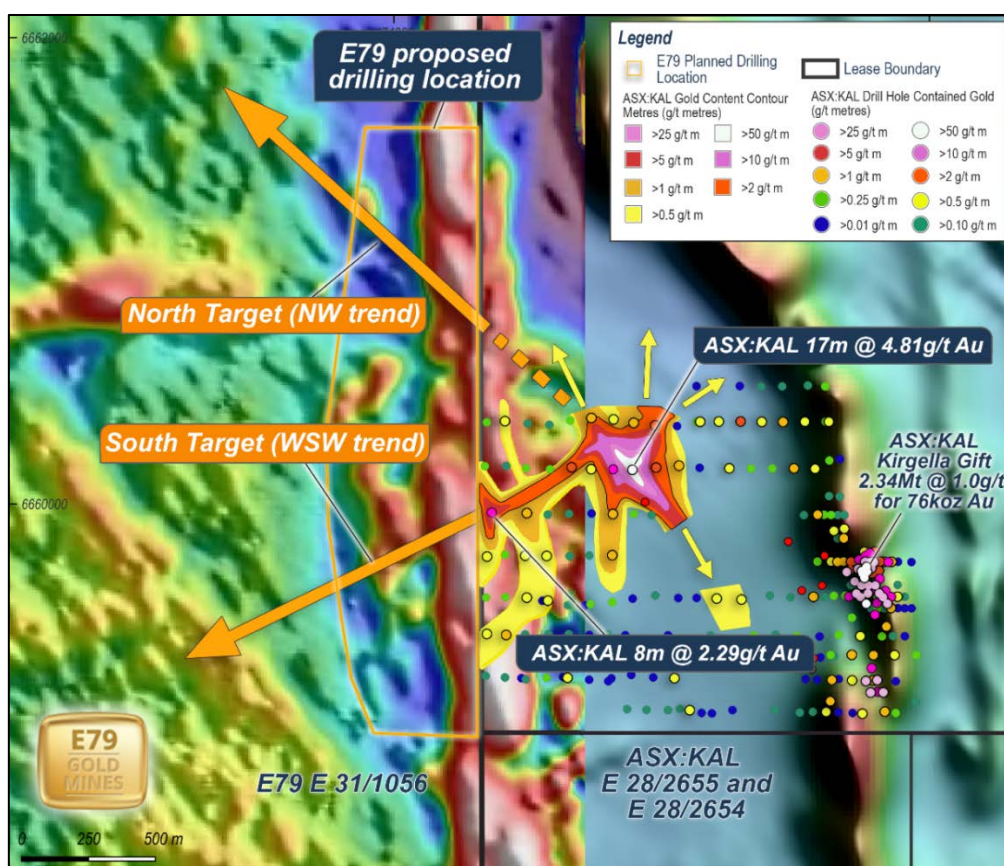
The LTZ is one of the world's richest gold belts with more than 30 million ounces ('Moz') in historical production, reserves and resources and hosts numerous prolific deposits including Granny Smith (5.8Moz), Sunrise Dam (10.3Moz) and Wallaby (11.8Moz)<sup>3</sup>.

<sup>3</sup> Refer to E79 Gold Prospectus dated 17 August 2021

Neighbouring company, KalGold, has recently released significant assay results<sup>4</sup> from drilling at an emerging greenfields gold discovery called Lighthouse, in a structure parallel to the LTZ. Mineralisation at Lighthouse is interpreted to follow structures cross-cutting the north- south striking stratigraphy, highlighted by thick, shallow intercepts with results including (Figure 1)<sup>5,6</sup>:

- **8m @ 2.29g/t Au** from 60m (KGAC24045) – located ~40m from the E79 Gold/KalGold tenement boundary; and
- **17m @ 4.81g/t Au** from 48m to end of drill-hole (KGAC24152) – located ~550m from the E79 Gold/KalGold tenement boundary.

These interpreted structures, identified in magnetic and gravity geophysical data, extend into E79 Gold’s tenements (see Figure 2) – where they have not yet been drill tested. A large-scale aircore drilling program has commenced to test these structures, both where they extend into E79 Gold’s tenure as well as potential repeats of these structures along strike.



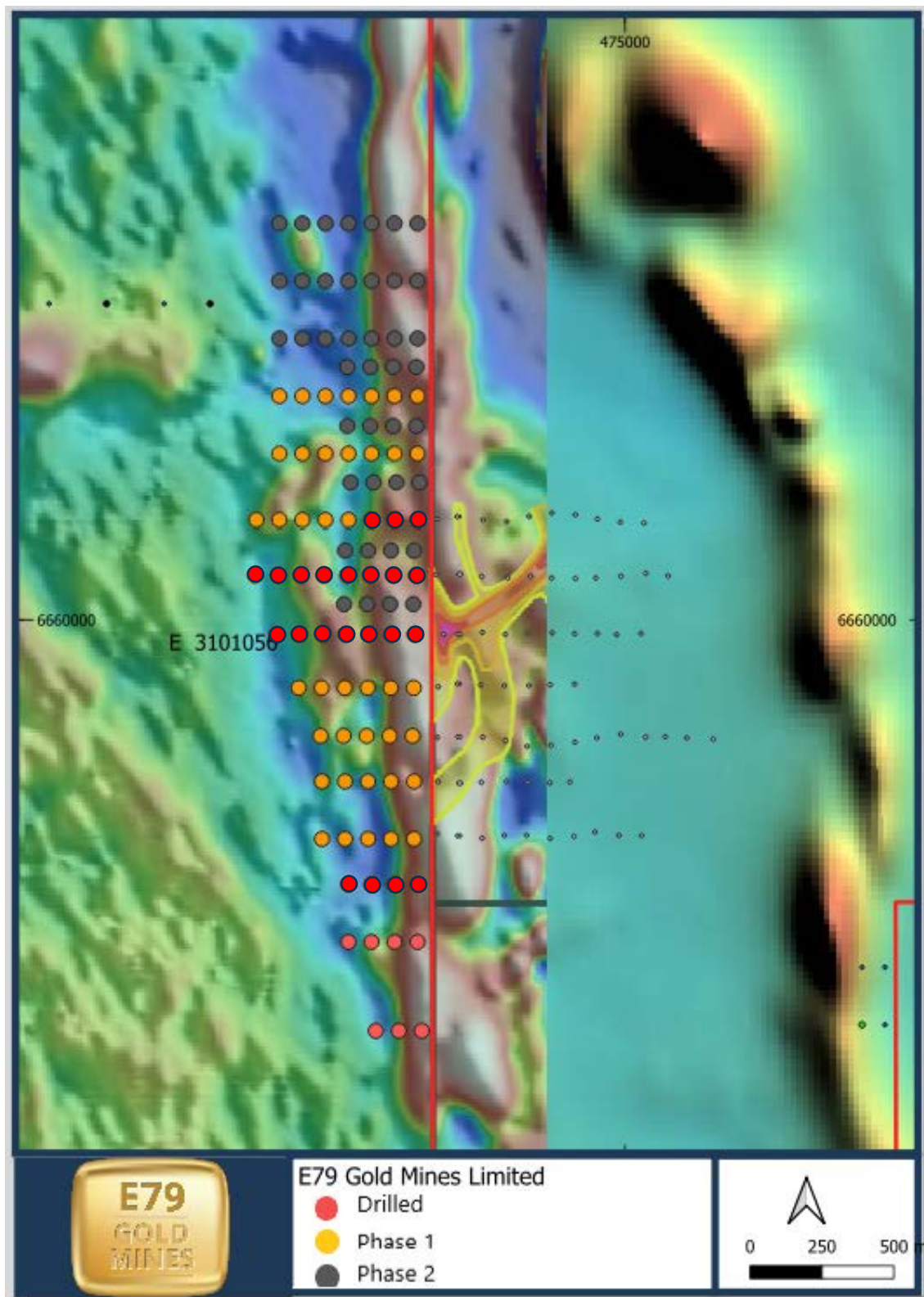
**Figure 2.** Map detailing the emerging Lighthouse discovery in proximity to E79 Gold’s tenure with high-resolution magnetic imagery in the background.  
(adapted from KalGold ASX announcement 7 Feb 2025).

<sup>4</sup> Refer to Kal Gold ASX Announcement 7 February 2025

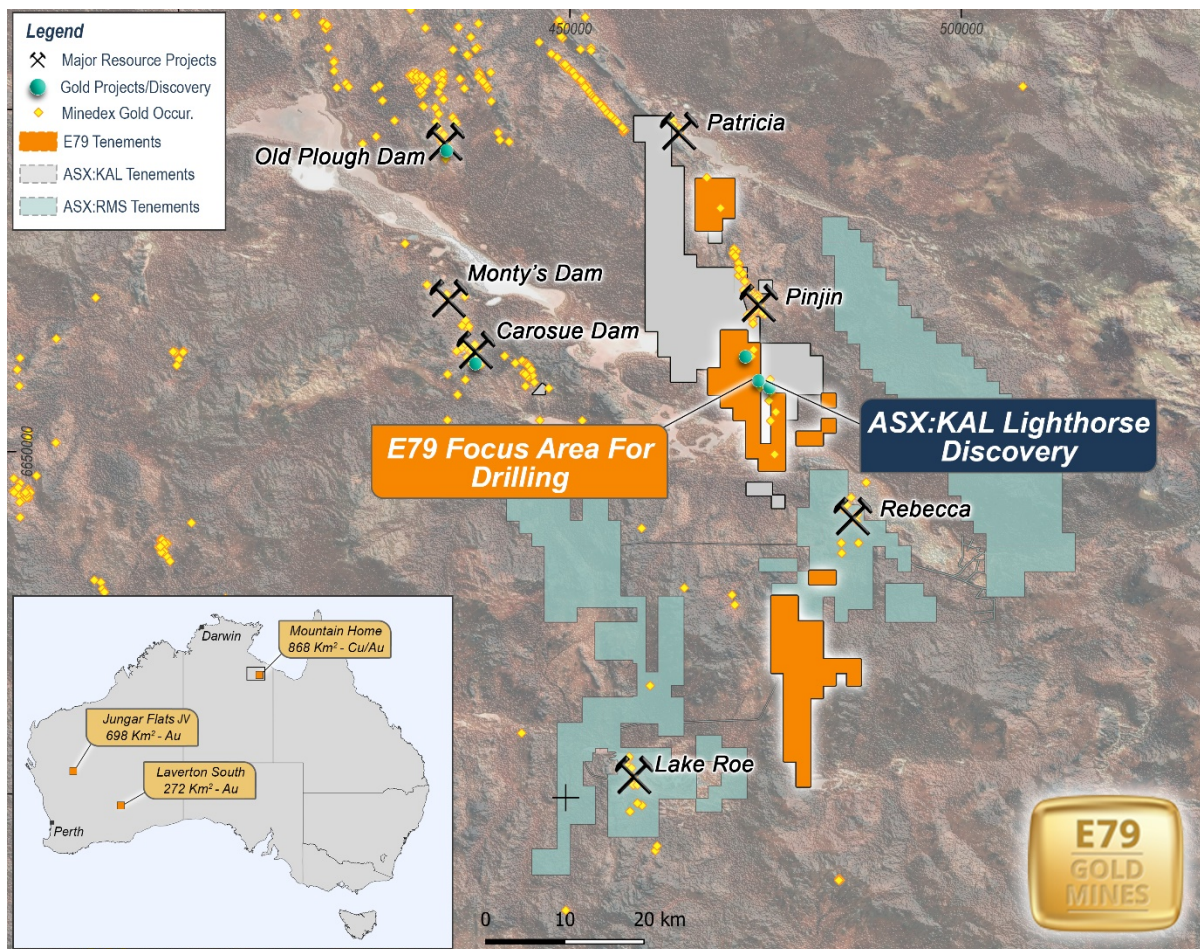
<sup>5</sup> Refer to Kalgoorlie Gold Mining ASX Announcement 18 December 2024

<sup>6</sup> Refer to Kalgoorlie Gold Mining ASX Announcement 7 February 2025

The program, which will comprise 110 aircore holes for ~7,000m, is expected to be completed within three weeks with the first batch of gold assays anticipated to be received by mid-April.



**Figure 3.** Planned aircore drill program showing Phase1, Phase 2 and drilled holes.



**Figure 4.** Map of the Laverton South Project

E79 Gold is focusing on near-term discovery opportunities in the Laverton South Gold Project and the Mountain Home Cu-Au-Bi Project (NT).

Our motto: **Money in the ground.**

Yours sincerely,



**Chris Cairns**  
**Non-Executive Chair**



*The information in this report that relates to Exploration Results is based on information compiled by Mr Ned Summerhayes, a Competent Person who is a member of the Australian Institute of Geoscientists. Mr Summerhayes is a full-time employee, a shareholder and an option holder of the Company. Mr Summerhayes has sufficient experience that is relevant to the style of mineralisation and type of deposit under consideration and to the activity being undertaken to qualify as a Competent Person as defined in the 2012 Edition of the 'Australasian Code for Reporting of Exploration Results, Mineral Resources and Ore Reserves'. Mr Summerhayes consents to the inclusion in the report of the matters based on his information in the form and context in which it appears.*

*Previously Reported Information: The information in this report that references previously reported exploration results is extracted from the Company's ASX market announcements released on the date noted in the body of the text where that reference appears. The previous market announcements are available to view on the Company's website or on the ASX website ([www.asx.com.au](http://www.asx.com.au)). The Company confirms that it is not aware of any new information or data that materially affects the information included in the original market announcements. The Company confirms that the form and context in which the Competent Person's findings are presented have not been materially modified from the original market announcements.*

Authorised for release by the Non-Executive Chair of E79 Gold Mines Limited.

**For Further Information, please contact:**

**E79 Gold Mines Limited**

Phone: 08 9287 7625

[info@e79gold.com.au](mailto:info@e79gold.com.au)

**Media Enquiries:**

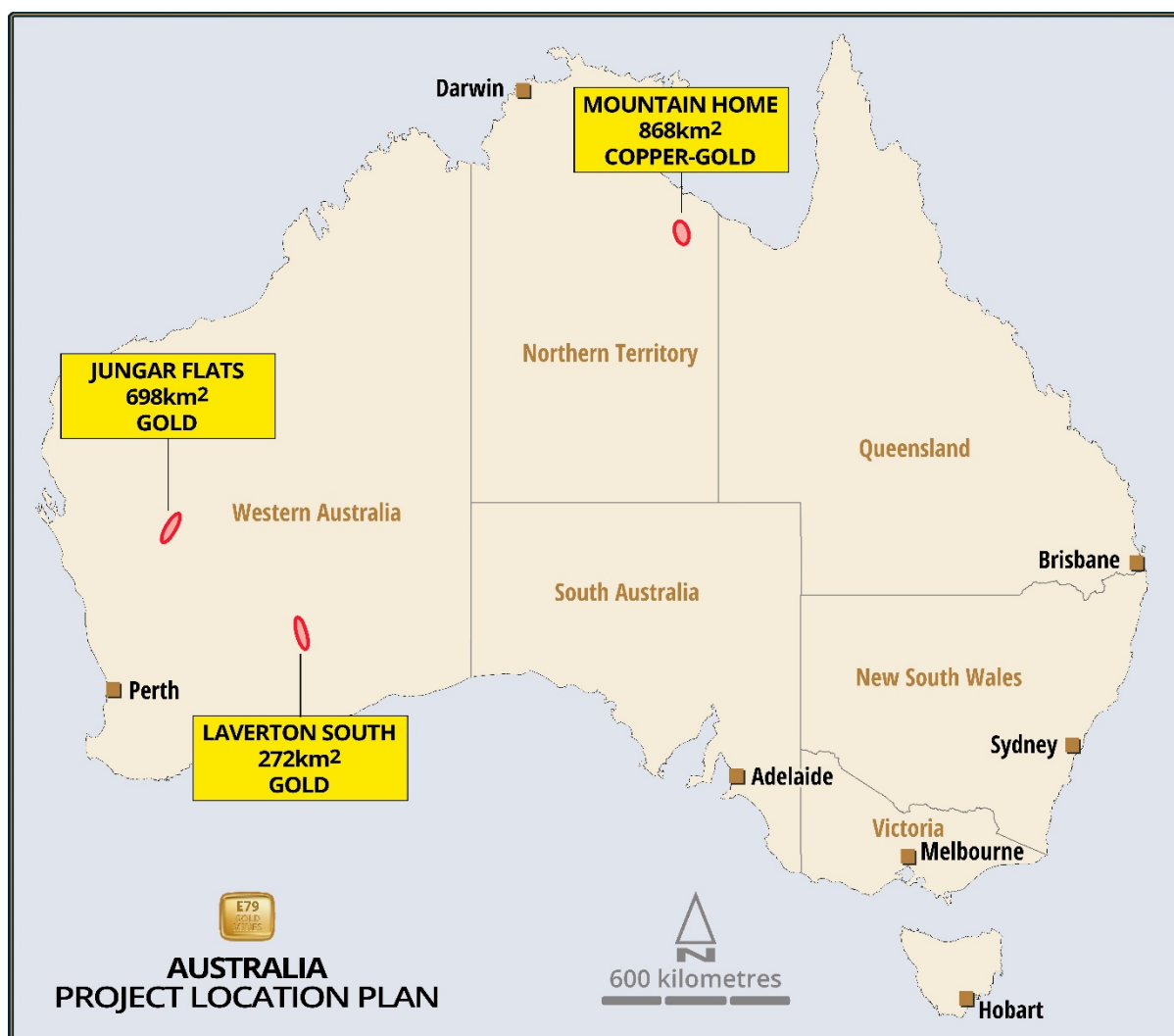
Nicholas Read – Read Corporate

Phone: 08 9388 1474

## ABOUT E79 GOLD MINES LIMITED (ASX: E79)

E79 Gold's Projects (Figure 5) comprise Western Australia tenure in both the Laverton Tectonic Zone and Murchison Goldfields, both of which are endowed with >30 million ounces of gold and located within the Yilgarn Craton of Western Australia. The Murchison project is subject to an earn-in and joint venture agreement with Scorpion Minerals<sup>7</sup> allowing E79 Gold to focus on the gold discovery potential in the Laverton South Project.

Additionally, E79 Gold holds ~1,838km<sup>2</sup> of highly prospective ground including within the McArthur Basin of the Northern Territory, which is the world's largest accumulation of Zn-Pb<sup>8</sup> and is prospective for copper, gold, bismuth and diamonds.



**Figure 5:** Map of E79 Gold's exploration projects

<sup>7</sup> See ASX announcement 14 February 2025

<sup>8</sup> Huston et al, 2023, Zinc on the edge, Mineralium Deposita 58 (707-729)